

NewYork-Presbyterian
Phyllis and David Komansky
Center for Children's Health

Pediatric Services Directory



2016

Your guide to children's
health professionals

Welcome!

The New York-Presbyterian Phyllis and David Komansky Center for Children’s Health is a full-service, multidisciplinary “children’s hospital within a hospital” affiliated with Weill Cornell Medicine, one of the top-ranked clinical and medical research centers in the country. **New York-Presbyterian Hospital ranks in more pediatric specialties than any other New York metro area hospital in U.S. News & World Report’s “Best Children’s Hospitals”— and ranks number one in New York City.**

NYP/Komansky Center and Weill Cornell Medicine provide comprehensive care in pediatric emergency medicine, neonatology, pediatric critical care, and the full range of medical and surgical subspecialties for children, from newborns to adolescents. Our experienced and skilled physicians, surgeons, nurses, physician-assistants, nutritionists, counselors, and other healthcare professionals manage routine and complex medical conditions, while addressing the psychological and family concerns that accompany childhood illness.

Our areas of expertise include:

- | | |
|---------------------------------------|-----------------------------------|
| Allergy & Immunology | Neurology |
| Anesthesiology | Neuroradiology |
| Cardiology and Cardiothoracic Surgery | Neurosurgery |
| Child Development | Neonatology/Newborn Medicine |
| Craniofacial Surgery | Obesity and Nutrition |
| Critical Care Medicine | Ophthalmology |
| Dentistry | Orthopedics |
| Dermatology | Otolaryngology (ENT) |
| Emergency Medicine | Perinatal Medicine |
| Endocrinology | Psychiatry (Child and Adolescent) |
| Gastroenterology | Psychology (Child and Adolescent) |
| General Surgery | Pulmonology |
| Genetics | Radiology |
| Gynecology (Adolescent) | Rehabilitation |
| Hematology & Oncology | Rheumatology |
| Infectious Diseases | Transplantation |
| Nephrology | Sleep Medicine |
| | Urology |

Patient Transfers

As a major regional and national referral center for children, **the Komansky Center for Children’s Health offers a physician access transfer program – 1-800-NYP-STAT (800-697-7828) – to coordinate patient transfer when tertiary or quaternary care is required.**

Table of Contents

Introduction	1
Division Chiefs and Program Leaders	3
Contact Numbers	6
Adolescent Medicine	8
Allergy & Immunology	8
Anesthesiology	9
Cardiology	12
Cardiothoracic Surgery, Pediatric/Congenital	15
Child Development	15
Child Protection	16
Critical Care Medicine	17
Dentistry	19
Dermatology	20
Emergency Medicine	21
Endocrinology	25
Gastroenterology and Nutrition	26
General Surgery	28
Genetics	30
Gynecology, Adolescent	31
Hematology-Oncology	32
Hospitalist - General Inpatient	34
Hospitalist - NYP/Lower Manhattan	37
Infectious Diseases	40
Neonatology	40
Neonatology - NYP/Lower Manhattan	42
Nephrology and Kidney Transplantation	42
Neurology	43
Neuroradiology	45
Neurosurgery	45
Ophthalmology	47
Orthopedics	48
Otolaryngology	50
Psychiatry	51
Pulmonology	62
Radiology	64
Rehabilitation Medicine	64
Rheumatology	65
Sleep Medicine	65
Urology	66
Voluntary and Affiliated Pediatric Faculty	68
Index	70

Division Chiefs and Program Leaders

Pediatrician-in-Chief

NYP Komansky Center for Children's Health

Nancy C. Paduano Professor and Chairman

Department of Pediatrics, Weill Cornell Medicine

Gerald M. Loughlin, MD, MS

212-746-4111

Chief, Pediatric Anesthesiology

Aarti Sharma, MD

212-746-2903

George W. Hambrick, Jr. Professor and Chairman, Department of Dermatology

Richard D. Granstein, MD

646-962-3376

Chief, General Academic Pediatrics

Vice Chair for Education and Administration, Pediatrics

Susan B. Bostwick, MD, MBA

212-746-3131

Pediatric Cardiology

212-746-3561

Chief, Pediatric Critical Care Medicine

Vice Chair for Operations, Pediatrics

Bruce M. Greenwald, MD

212-746-3056

Chief, Pediatric Emergency Medicine, NYP/Weill Cornell

Shari L. Platt, MD

212-746-3300

Director, Pediatric Emergency Medicine, NYP/Lower Manhattan

David Listman, MD

212-312-5070

Interim Chief, Pediatric Endocrinology

Zoltan Antal, MD

646-962-3442

Division Chiefs and Program Leaders, Continued

Chief, Pediatric Gastroenterology and Nutrition

Robbyn E. Sockolow, MD

646-962-3869

Chief, Medical Genetics

Christopher M. Cunniff, MD

646-962-2205

Chief, Pediatric Hematology & Oncology

Vice Chair for Clinical Research Development, Pediatrics

Sujit Sheth, MD

212-746-3400

Director, Clinical Service, Pediatric Infectious Diseases

Christine M. Salvatore, MD

646-962-6845

Chief, Pediatric Nephrology

Eduardo M. Perelstein, MD, MPH

646-962-4324

Chief, Pediatric Neurosurgery

Mark M. Souweidane, MD

212-746-2363

Chief, Child Neurology

Barry E. Kosofsky, MD, PhD

212-746-3321

Chief, Newborn Medicine

Jeffrey M. Perlman, MB, ChB

212-746-3530

Chief, Pediatric Ophthalmology

Richard L. Levy, MD

646-962-2020

Chief, Pediatric Orthopedics, Hospital for Special Surgery

Roger F. Widmann, MD

212-606-1325

Chief, Pediatric Otolaryngology - Head & Neck Surgery

Vikash Modi, MD

646-962-3017

Division Chiefs and Program Leaders, Continued

Chief, Pediatric Radiology

Arzu Kovanlikaya, MD

212-746-2555

Chief, Pediatric Surgery

Nitsana A. Spigland, MD

212-746-5648

Director, Child and Adolescent Psychiatry

John T. Walkup, MD

212-746-1891

Chief, Pediatric Pulmonology, Allergy & Immunology

Stefan Worgall, MD, PhD

646-962-3410

Chief, Pediatric Rheumatology, Hospital for Special Surgery

Thomas J. A. Lehman, MD

212-606-1151

Director, Kidney and Pancreas Transplant Program and

Chief of Transplant Surgery

Sandip Kapur, MD

212-746-5330

Chief, Pediatric Urology

Dix Phillip Poppas, MD

212-746-5337

Chairman, Department of Pediatrics, New York-Presbyterian/Queens

Vice Chair, Pediatrics, Weill Cornell Medicine

Joseph J. Abularrage, MD

718-670-1033

Contact Numbers

Appointments/Main Numbers

Pediatric Medical Sub-Specialty Practice: 646-962-KIDS (646-962-5437)

Pediatric Ambulatory Care Clinic (Helmsley 5th Floor): 212-746-3303

Emergency/Emergent Care Patient Transfer

Hospital Transfers: 1-800-NYP-STAT (800-697-7828)

Pediatric Intensive Care Unit Transfer: 212-746-0308

Pediatric Emergency Department: 212-746-3300

Pediatric Burn Center: 212-746-5024

Hospital for Special Surgery Pediatric Fracture and Injury Hotline: 877-477-1543

Pediatric Subspecialties (Main Numbers)

Allergy & Immunology: 646-962-3410

Anesthesiology: 212-746-2962

Cardiology: 212-746-3561

Cardiothoracic Surgery: 212-746-5014

Child Development: 646-962-4303

Dentistry: 212-746-5119

Dermatology: 646-962-3376

Endocrinology: 646-962-3442

Gastroenterology & Nutrition: 646-962-3869

General Surgery: 212-746-5648

Genetics: 646-962-2205

Infectious Diseases: 646-962-6845

Hematology & Oncology: 212-746-3400

Nephrology: 646-962-4324

Neurology: 212-746-3278

Neuroradiology: 212-746-2581

Neurosurgery: 212-746-2363

Ophthalmology: 646-962-2020

Orthopedics – HSS Referral Line: 888-720-1948

Otolaryngology: 646-962-3017

Psychiatry, Outpatient Child and Adolescent: 888-694-5700

Psychiatry, Inpatient Child and Adolescent: 212-746-3842

Pulmonology: 646-962-3410

Radiology: 212-746-9729

Rheumatology – HSS Referral Line: 877-606-1555

Sleep Medicine: 646-962-3410

Transplantation: 212-746-5330

Urology: 212-746-5337

Programs, Centers and Labs

Pediatric Aerodigestive Center: 646-962-3410
Pediatric Chest Pain Program: 212-746-3561
Congenital Adrenal Hyperplasia (CAH) Center: 646-962-3442
Pediatric Craniofacial Clinic: 212-746-1274
Pediatric Diabetes Program: 646-962-3442
Fetal Echocardiography: 212-746-3561
Perinatal Center: 212-746-3530
Pediatric Comprehensive Epilepsy Center: 212-746-3278
Pediatric Concussion Clinic Hotline: 212-746-1112
Pediatric Inflammatory Bowel Disease (IBD) Center: 646-962-3869
Pediatric Motility Center: 646-962-3869
Pediatric Myeloproliferative Neoplasm Program: 212-746-3873
Pediatric Obesity Program: 646-962-3442
Pediatric Sleep and Breathing Disorders Center: 646-962-3410
Center for Special Studies in Pediatric HIV Disease: 646-962-6845
Pediatric Tics and Tourette's Syndrome Program: 212-746-3278
Pediatric Pulmonary Function Testing Lab: 646-962-3410
Weill Cornell Autism Research Program: 212-746-5095

Patient/Family Resources

Admitting Department: 212-746-4250
Child Life Pre-Op Tours: 212-746-9970 (leave message)
Child Life Services: 212-746-3516
Helmsley Medical Tower Guest Lodging: 212-472-8400
International Patients: 212-746-4455
Komansky Center Family Advisory Council: 212-746-6007
Medical Records: 212-746-0530
Pastoral Care: 212-746-6971
Patient Information: 212-746-5000
Myra Mahon Patient Resource Center (M-F, 9-5): 646-962-4472
Patient Services: 212-746-4293

Adolescent Medicine



Jane Chang, MD

505 East 70th Street, Helmsley Medical Tower, 5th Floor
New York, NY 10021
PHONE: 212-746-3303
FAX: 212-746-8503

EXPERTISE: Adolescent Development, Adolescent Gynecology, Menstrual Disorders, Eating Disorders, Adolescent Parenting



Lisa S. Ipp, MD

505 East 70th Street, Helmsley Medical Tower, 5th Floor
New York, NY 10021
PHONE: 212-746-3303
FAX: 212-746-8503

EXPERTISE: Adolescent Development, Adolescent Gynecology, Menstrual Disorders, Eating Disorders

Allergy & Immunology



Claudette Bailon, RN

Pediatric Nurse
505 East 70th Street, Helmsley Medical Tower, 3rd Floor
New York, NY 10021
PHONE: 646-962-3410
FAX: 646-962-0246

EXPERTISE: Pediatric Allergy & Immunology



Joseph Ciavarro, Jr., MS, PA-C, RRT

Program Coordinator, Pediatric Aerodigestive Center
505 East 70th Street, Helmsley Medical Tower, 3rd Floor
New York, NY 10021
PHONE: 646-962-3410
FAX: 646-962-0246



Lisa Moreno, MD

505 East 70th Street, Helmsley Medical Tower, 3rd Floor
New York, NY 10021
PHONE: 646-962-3410
FAX: 646-962-0246

EXPERTISE: Pediatric Allergy and Immunology, Asthma, Allergic Rhinitis, Food Allergy, Atopic Dermatitis, Drug Allergy, Chronic Urticaria, Adult Allergy and Immunology

Anesthesiology



Aarti Sharma, MD, MBBS

Chief, Pediatric Anesthesiology
525 East 68th Street, M-300
New York, NY 10065
PHONE: 212-746-2962
FAX: 212-746-8563

EXPERTISE: Pediatric Anesthesiology



Michelle C. Carley, MD

525 East 68th Street, M-300
New York, NY 10065
PHONE: 212-746-2962
FAX: 212-746-8563

EXPERTISE: Pediatric Anesthesiology



Franklin Chiao, MD

525 East 68th Street, M-300
New York, NY 10065
PHONE: 212-746-2962
FAX: 212-746-8563

EXPERTISE: Pediatric Anesthesiology



Anjalee Dave, MD

525 East 68th Street, M-300
New York, NY 10065
PHONE: 212-746-2962
FAX: 212-746-8563

EXPERTISE: Pediatric Anesthesiology

Anesthesiology, Continued



Miles H. Dinner, MD

525 East 68th Street, M-300
New York, NY 10065
PHONE: 212-746-2962
FAX: 212-746-8563

EXPERTISE: Pediatric Anesthesiology



Matthew C. Gomillion, MD

525 East 68th Street, M-300
New York, NY 10065
PHONE: 212-746-2962
FAX: 212-746-8563

EXPERTISE: Pediatric Anesthesiology



Dana L. Gurvitch, MD

525 East 68th Street, M-300
New York, NY 10065
PHONE: 212-746-2962
FAX: 212-746-8563

EXPERTISE: Pediatric Anesthesiology



Jung Hee Han, MD

525 East 68th Street, M-300
New York, NY 10065
PHONE: 212-746-2962
FAX: 212-746-8563

EXPERTISE: Pediatric Anesthesiology



Howard Daniel Koff, MD

525 East 68th Street, M-300
New York, NY 10065
PHONE: 212-746-2962
FAX: 212-746-8563

EXPERTISE: Pediatric Anesthesiology, Laparoscopic Anesthesia



Tal Levy, MD

525 East 68th Street, M-300
New York, NY 10065
PHONE: 212-746-2962
FAX: 212-746-8563

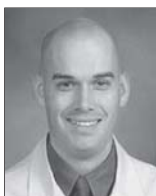
EXPERTISE: Pediatric Anesthesiology



Aarti Mehta, MD

525 East 68th Street, M-300
New York, NY 10065
PHONE: 212-746-2962
FAX: 212-746-8563

EXPERTISE: Pediatric Anesthesiology



Peter M. Savard, MD

525 East 68th Street, M-300
New York, NY 10065
PHONE: 212-746-2962
FAX: 212-746-8563

EXPERTISE: Pediatric Anesthesiology, Pediatric Critical Care Medicine



Jacques H. Scharoun, MD

525 East 68th Street, M-300
New York, NY 10065
PHONE: 212-746-2962
FAX: 212-746-8563

EXPERTISE: Pediatric Anesthesiology



David G. Stein, MD

525 East 68th Street, M-300
New York, NY 10065
PHONE: 212-746-2962
FAX: 212-746-8563

EXPERTISE: Pediatric Anesthesiology

Anesthesiology, Continued



Joseph Tjan, MD

525 East 68th Street, M-300
New York, NY 10065
PHONE: 212-746-2962
FAX: 212-746-8563

EXPERTISE: Pediatric Anesthesiology, Vascular Anesthesia



Albert C. Yeung, MD

525 East 68th Street, M-300
New York, NY 10065
PHONE: 212-746-2962
FAX: 212-746-8563

EXPERTISE: Pediatric Anesthesiology

Cardiology



Seena S. Abraham, MBBS

525 East 68th Street, F-677
New York, NY 10065
PHONE: 212-746-3561
FAX: 212-746-8373

EXPERTISE: Congenital Heart Disease, Pediatric and Fetal Echocardiography, Pediatric EKG and Cardiac Monitoring of Arrhythmias, Kawasaki Disease, Rheumatic Heart Disease, Acquired Heart Disease in Children



Sheila J. Carroll, MD

525 East 68th Street, F-677
New York, NY 10065
PHONE: 212-746-3561
FAX: 212-746-8373

EXPERTISE: Fetal Cardiology, Congenital Heart Disease, Fetal and Pediatric Echocardiography, Pediatric EKG, Heart Murmurs, Cardiac Arrhythmia, Marfan Syndrome



Matthew A. Crystal, MD

525 East 68th Street, F-677
New York, NY 10065
PHONE: 212-746-3561
FAX: 212-746-8373

EXPERTISE: Pediatric Catheterization



Jeffrey Dayton, MD

525 East 68th Street, F-677
New York, NY 10065
PHONE: 212-746-3561
FAX: 212-746-8373

EXPERTISE: Congenital Heart Disease, Fetal Echocardiography, Transthoracic Echocardiography, Transesophageal Echocardiography, Chest Pain, Marfan Syndrome



Patrick A. Flynn, MD

525 East 68th Street, F-677
New York, NY 10065
PHONE: 212-746-3561
FAX: 212-746-8373

EXPERTISE: Congenital Heart Disease, Transesophageal Echocardiography, Fetal Echocardiography, Chest Pain, Marfan Syndrome, Heart Murmurs, Kawasaki Disease, Syncope (Fainting)



Jeffrey H. Kern, MD

525 East 68th Street, F-677
New York, NY 10065
PHONE: 212-746-3561
FAX: 212-746-8373

EXPERTISE: Electrocardiography, Holter Monitoring, Congenital Heart Disease, Stress Testing, Heart Rhythm, Echocardiography



Leonardo Liberman, MD

525 East 68th Street, F-677
New York, NY 10065
PHONE: 212-746-3561
FAX: 212-746-8373

EXPERTISE: Pediatric Electrophysiology

Cardiology, Continued



Eric Silver, MD

525 East 68th Street, F-677
New York, NY 10065
PHONE: 212-746-3561
FAX: 212-746-8373

EXPERTISE: Pediatric Electrophysiology



Harsimran S. Singh, MD, MSc

520 East 70th Street, Starr-443
New York, NY 10021
PHONE: 646-962-5558
FAX: 646-962-2234

EXPERTISE: Clinical Cardiology, Interventional Cardiology, Structural Heart Disease, Cardiac Catheterization, Adult Congenital Heart Disease



L. Gary Steinberg, MD

525 East 68th Street, F-677
New York, NY 10065
PHONE: 212-746-3561
FAX: 212-746-8373

EXPERTISE: Congenital Heart Disease, Pediatric Echocardiography, Stress Testing, Holter Monitoring, Heart Murmurs, Arrhythmias

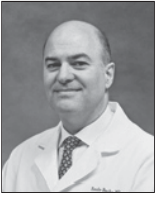


Alejandro Torres, MD

525 East 68th Street, F-677
New York, NY 10065
PHONE: 212-746-3561
FAX: 212-746-8373

EXPERTISE: Pediatric Catheterization, Interventional Cardiology

Cardiothoracic Surgery, Pediatric/Congenital



Emile Bacha, MD

Director, Congenital and Pediatric Cardiac Surgery, New York-Presbyterian
525 East 68th Street, F-677

New York, NY 10065

PHONE: 212-746-5014

FAX: 212-746-8373

EXPERTISE: Pediatric Cardiac Surgery, Pediatric Cardiothoracic Surgery, Adult Congenital Heart Disease, Congenital Heart Disease, Minimally Invasive Cardiac Surgery



Paul J. Chai, MD

525 East 68th Street, F-677

New York, NY 10065

PHONE: 212-746-5014

FAX: 212-746-8373

EXPERTISE: Pediatric Cardiac Surgery, Pediatric Cardiothoracic Surgery



David Kalfa, MD, PhD

525 East 68th Street, F-677

New York, NY 10065

PHONE: 212-746-5014

FAX: 212-746-8373

EXPERTISE: Pediatric Cardiac Surgery, Congenital Heart Defect, Congenital Heart Disease, Congenital Heart Disorder, Congenital Heart Failure

Child Development



Jennifer F. Cross, MD

505 East 70th Street, Helmsley Medical Tower, 3rd Floor

New York, NY 10021

PHONE: 646-962-4303

FAX: 646-962-0259

EXPERTISE: Pediatric Behavior and Development, Learning Disabilities, Behavioral Pediatrics, Pediatric Autism

Child Development, Continued



Rachel Kaplan, MEd, MSN, CPNP

505 East 70th Street, Helmsley Medical Tower, 3rd Floor
New York, NY 10021
PHONE: 646-962-4303
FAX: 646-962-0259

EXPERTISE: ADHD, Autism Spectrum Disorder, Behavioral Pediatrics



Elizabeth A. Poole-Di Salvo, MD

505 East 70th Street, Helmsley Medical Tower, 3rd Floor
New York, NY 10021
PHONE: 646-962-4303
FAX: 646-962-0259

EXPERTISE: Learning Disabilities, Language Delay, Autism Spectrum Disorder, Attention Deficit Hyperactivity Disorder (ADHD)



Mary J. Ward, PhD

505 East 70th Street, Helmsley Medical Tower, 3rd Floor
New York, NY 10021
PHONE: 646-962-4303
FAX: 646-962-0259

EXPERTISE: Behavioral Pediatrics, Parent-Infant Therapy, Developmental Disorders, Reactive Attachment Disorder

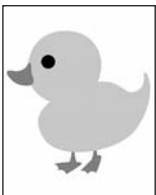
Child Protection



Prina P. Amin, MD

36-11 21st Street
Long Island City, NY 11106
PHONE: 718-482-7772
FAX: 718-483-9648

EXPERTISE: Child Protection, Child Abuse



Lara Gordon, MD

215 East 79th Street
New York, NY 10075
PHONE: 212-737-7800
FAX: 212-737-0251

EXPERTISE: Child Protection, Child Abuse

Critical Care Medicine



Bruce M. Greenwald, MD

Chief, Pediatric Critical Care Medicine

525 East 68th Street, M-508

New York, NY 10065

PHONE: 212-746-3056

FAX: 212-746-8332

EXPERTISE: Pediatric Critical Care Medicine, Traumatic Brain Injury, Diabetic Ketoacidosis, Circulatory Shock, Respiratory Failure, Severe Asthma, Diabetic Ketoacidosis, Oncologic Intensive Care



Naomi B. Bishop, MD

525 East 68th Street, M-508

New York, NY 10065

PHONE: 212-746-3056

FAX: 212-746-8332

EXPERTISE: Pediatric Critical Care Medicine, Critical Care Cardiology, Traumatic Brain Injury, Pneumonia, Circulatory Shock, Respiratory Failure, Severe Asthma, Diabetic Ketoacidosis, Oncologic Intensive Care



Robert Finkelstein, MD

525 East 68th Street, M-508

New York, NY 10065

PHONE: 212-746-3056

FAX: 212-746-8332

EXPERTISE: Pediatric Critical Care Medicine, Pediatric Trauma, Resuscitation, Circulatory Shock, Respiratory Failure, Traumatic Brain Injury, Severe Asthma, Diabetic Ketoacidosis, Oncologic Intensive Care



Peggy Han, MD

525 East 68th Street, M-508

New York, NY 10065

PHONE: 212-746-3056

FAX: 212-746-8332

EXPERTISE: Pediatric Critical Care Medicine, Circulatory Shock, Respiratory Failure, Traumatic Brain Injury, Severe Asthma, Diabetic Ketoacidosis, Oncologic Intensive Care

Critical Care Medicine, Continued



Joy D. Howell, MD

525 East 68th Street, M-508
New York, NY 10065
PHONE: 212-746-3056
FAX: 212-746-8332

EXPERTISE: Pediatric Critical Care Medicine, VAP (Ventilator Associated Pneumonia), Status Asthmaticus, Respiratory Failure, Mechanical Ventilation, Circulatory Shock, Traumatic Brain Injury, Diabetic Ketoacidosis, Oncologic Intensive Care



Deyin D. Hsing, MD

525 East 68th Street, M-508
New York, NY 10065
PHONE: 212-746-3056
FAX: 212-746-8332

EXPERTISE: Pediatric Critical Care Medicine, Circulatory Shock, Respiratory Failure, Traumatic Brain Injury, Severe Asthma, Diabetic Ketoacidosis, Oncologic Intensive Care



James S. Killinger, MD

525 East 68th Street, M-508
New York, NY 10065
PHONE: 212-746-3056
FAX: 212-746-8332

EXPERTISE: Pediatric Critical Care Medicine, Circulatory Shock, Respiratory Failure, Traumatic Brain Injury, Severe Asthma, Diabetic Ketoacidosis, Oncologic Intensive Care



Marianne Nellis, MD

525 East 68th Street, M-508
New York, NY 10065
PHONE: 212-746-3056
FAX: 212-746-8332

EXPERTISE: Pediatric Critical Care Medicine, Circulatory Shock, Respiratory Failure, Traumatic Brain Injury, Severe Asthma, Diabetic Ketoacidosis, Oncologic Intensive Care



Steven Pon, MD

525 East 68th Street, M-508
New York, NY 10065
PHONE: 212-746-3056
FAX: 212-746-8332

EXPERTISE: Pediatric Critical Care Medicine, Pediatric Emergency Medicine, Traumatic Brain Injury, Respiratory Failure, Circulatory Shock, Severe Asthma, Diabetic Ketoacidosis, Oncologic Intensive Care



Chani Traube, MD

525 East 68th Street, M-508
New York, NY 10065
PHONE: 212-746-3056
FAX: 212-746-8332

EXPERTISE: Pediatric Critical Care Medicine, Traumatic Brain Injury, Circulatory Shock, Respiratory Failure, Severe Asthma, Diabetic Ketoacidosis, Oncologic Intensive Care

Dentistry



Paula Ancelson, DMD

505 East 70th Street, Helmsley Medical Tower, 1st Floor
New York, NY 10021
PHONE: 212-746-5119
FAX: 212-746-8330

EXPERTISE: Oral and Maxillofacial Surgery



Vanessa Coupet, DMD

505 East 70th Street, Helmsley Medical Tower, 1st Floor
New York, NY 10021
PHONE: 212-746-5119
FAX: 212-746-8330

EXPERTISE: Oral and Maxillofacial Surgery, Restorative Dentistry

Dermatology



Anna M. Bender, MD

Chief, Pediatric Dermatology
1305 York Avenue, 9th Floor
New York, NY 10021
PHONE: 646-962-3376
FAX: 646-962-0033

2315 Broadway, 3rd Floor
New York, NY 10024
PHONE: 646-963-3376

EXPERTISE: Adolescent Dermatology, Pediatric Dermatology, Cutaneous Vascular Anomalies, Rheumatologic Dermatology, Complex Medical Dermatology, Scleroderma



Cynthia L. Chen, MD

1305 York Avenue, 9th Floor
New York, NY 10021
PHONE: 646-962-3376
FAX: 646-962-0033

EXPERTISE: Adolescent Dermatology, Acne, Autoimmune Disorder, Skin Cancer, Eczema, Psoriasis, Laser Treatment, Sexually Transmitted Disease, Botox Treatment, Juvederm Fillers, Restylane Treatment



Karen Chernoff, MD

1305 York Avenue, 9th Floor
New York, NY 10021
PHONE: 646-962-3376
FAX: 646-962-0033

156 William Street, 11th Floor
New York, NY 10038
PHONE: 646-962-3376
FAX: 646-962-0033

EXPERTISE: Pediatric Dermatology, Adolescent Dermatology, Complex Skin Disease in Children, Skin Sign of Internal Disease, Skin Disorders in Infants, Children and Adolescents



Joseph L. Jorizzo, MD

1305 York Avenue, 9th Floor
New York, NY 10021
PHONE: 646-962-3376
FAX: 646-962-0033

EXPERTISE: Pediatric Dermatology, Complex Medical Dermatology Problems



Horatio F. Wildman, MD

1305 York Avenue, 9th Floor
New York, NY 10021
PHONE: 646-962-3376
FAX: 646-962-0033

EXPERTISE: Pediatric Dermatology, Scleroderma, Acne, Skin Cancer, Laser Surgery, Psoriasis, Collagen Injections, Melanoma, Connective Tissue Disease

Emergency Medicine



Shari L. Platt, MD

Chief, Pediatric Emergency Medicine, NYP/Weill Cornell
525 East 68th Street, 1st Floor
New York, NY 10065
PHONE: 212-746-3300
FAX: 212-746-4883

170 William Street
New York, NY 10038
PHONE: 212-312-5070

EXPERTISE: Pediatric Emergency Medicine



David H. Listman, MD

Director, Pediatric Emergency Medicine, NYP/Lower Manhattan Hospital
170 William Street
New York, NY 10038
PHONE: 212-312-5070

525 East 68th Street, 1st Floor
New York, NY 10065
PHONE: 212-746-3300
FAX: 212-746-4883

EXPERTISE: Pediatric Emergency Medicine

Emergency Medicine, Continued



Michael Alfonzo, MD

525 East 68th Street, 1st Floor
New York, NY 10065
PHONE: 212-746-3300
FAX: 212-746-4883

170 William Street
New York, NY 10038
PHONE: 212-312-5070

EXPERTISE: Pediatric Emergency Medicine



Kevin Y. Ching, MD

Director, Pediatric Simulation Center
525 East 68th Street, 1st Floor
New York, NY 10065
PHONE: 212-746-3300
FAX: 212-746-4883

170 William Street
New York, NY 10038
PHONE: 212-312-5070

EXPERTISE: Pediatric Emergency Medicine, Simulation



Robert Finkelstein, MD

525 East 68th Street, 1st Floor
New York, NY 10065
PHONE: 212-746-3300
FAX: 212-746-4883

EXPERTISE: Pediatric Trauma, Resuscitation, Pediatric Critical Care Medicine



Mia Friedman, MD

525 East 68th Street, 1st Floor
New York, NY 10065
PHONE: 212-746-3300
FAX: 212-746-4883

170 William Street
New York, NY 10038
PHONE: 212-312-5070

EXPERTISE: Pediatric Emergency Medicine



Catherine F. Hicks, MD

525 East 68th Street, 1st Floor
New York, NY 10065
PHONE: 212-746-3300
FAX: 212-746-4883

EXPERTISE: Pediatric Emergency Medicine



Amanda Kasem, MD

525 East 68th Street, 1st Floor
New York, NY 10065
PHONE: 212-746-3300
FAX: 212-746-4883

170 William Street
New York, NY 10038
PHONE: 212-312-5070

EXPERTISE: Pediatric Emergency Medicine



Janienne Kondrich, MD

525 East 68th Street, 1st Floor
New York, NY 10065
PHONE: 212-746-3300
FAX: 212-746-4883

170 William Street
New York, NY 10038
PHONE: 212-312-5070

EXPERTISE: Pediatric Emergency Medicine



Rachel H. Kowalsky, MD, MPH

525 East 68th Street, 1st Floor
New York, NY 10065
PHONE: 212-746-3300
FAX: 212-746-4883

EXPERTISE: Pediatric Emergency Medicine

Emergency Medicine, Continued



Mary Lane, MD

525 East 68th Street, 1st Floor
New York, NY 10065
PHONE: 212-746-3300
FAX: 212-746-4883

170 William Street
New York, NY 10038
PHONE: 212-312-5070

EXPERTISE: Pediatric Emergency Medicine



Sophia Lin, MD

525 East 68th Street, 1st Floor
New York, NY 10065
PHONE: 212-746-3300
FAX: 212-746-4883

170 William Street
New York, NY 10038
PHONE: 212-312-5070

EXPERTISE: Pediatric Emergency Medicine, Emergency Ultrasound



Marie Lupica, MD, MS

525 East 68th Street, 1st Floor
New York, NY 10065
PHONE: 212-746-3300
FAX: 212-746-4883

170 William Street
New York, NY 10038
PHONE: 212-312-5070

EXPERTISE: Pediatric Emergency Medicine



Michele Rosenthal, MD

525 East 68th Street, 1st Floor
New York, NY 10065
PHONE: 212-746-3300
FAX: 212-746-4883

170 William Street
New York, NY 10038
PHONE: 212-312-5070

EXPERTISE: Pediatric Emergency Medicine



Yaffa M. Vitberg, MD

525 East 68th Street, 1st Floor
New York, NY 10065
PHONE: 212-746-3300
FAX: 212-746-4883

170 William Street
New York, NY 10038
PHONE: 212-312-5070

EXPERTISE: Pediatric Emergency Medicine

Endocrinology



Zoltan Antal, MD

Interim Director, Pediatric Endocrinology
Director, Pediatric Diabetes Program

505 East 70th Street, Helmsley Medical Tower, 3rd Floor
New York, NY 10021
PHONE: 646-962-3442
FAX: 646-962-0265

EXPERTISE: Pediatric Diabetes Type I & II, Thyroid Disorders, Pituitary Disease, Adrenal Gland Disorders, Growth and Pubertal Disorders, Short Stature, Rickets



Laurie Block, RND, CDE

Certified Diabetes Educator

505 East 70th Street, Helmsley Medical Tower, 3rd Floor
New York, NY 10021
PHONE: 646-962-3442
FAX: 646-962-0265

EXPERTISE: Diabetes Education, Weight Management



Marisa Censani, MD

505 East 70th Street, Helmsley Medical Tower, 3rd Floor
New York, NY 10021
PHONE: 646-962-3442
FAX: 646-962-0265

EXPERTISE: Childhood Obesity, Bone and Mineral Metabolism, Short Stature, Growth Disorder, Pediatric Diabetes, Thyroid Disorder, Pediatric Osteoporosis, Rickets, Irregular Menstrual Cycle

Endocrinology, Continued



Emily Coppedge, RN, CPNP, CDE

Nurse Practitioner

505 East 70th Street, Helmsley Medical Tower, 3rd Floor
New York, NY 10021

PHONE: 646-962-3442

FAX: 646-962-0265

EXPERTISE: Pediatric Type 1 Diabetes, Pediatric Type 2 Diabetes



Alexis Feuer, MD

505 East 70th Street, Helmsley Medical Tower, 3rd Floor
New York, NY 10021

PHONE: 646-962-3442

FAX: 646-962-0265

EXPERTISE: Type 1 Diabetes, Type 2 Diabetes Mellitus, Metabolic Bone Disease, Growth Disorder, Congenital Adrenal Hyperplasia (CAH)



Oksana Lekarev, MD

505 East 70th Street, Helmsley Medical Tower, 3rd Floor
New York, NY 10021

PHONE: 646-962-3442

FAX: 646-962-0265

EXPERTISE: Congenital Adrenal Hyperplasia (CAH), Disorder of Puberty, Adrenal Disorder, Short Stature, Growth Disorder, Sexual Development Disorders, Polycystic Ovarian Syndrome, Irregular Menstrual Cycle, Thyroid Disorder

Gastroenterology and Nutrition



Robbyn E. Sockolow, MD

Chief, Pediatric Gastroenterology and Nutrition

505 East 70th Street, Helmsley Medical Tower, 3rd Floor
New York, NY 10021

PHONE: 646-962-3869

FAX: 646-962-0246

EXPERTISE: Inflammatory Bowel Disease (IBD), Crohn's Disease, Ulcerative Colitis, Celiac Disease, Autism Spectrum GI Disorders, Eosinophilic Esophagitis (EoE)



Elaine Barfield, MD

505 East 70th Street, Helmsley Medical Tower, 3rd Floor
New York, NY 10021
PHONE: 646-962-3869
FAX: 646-962-0246

EXPERTISE: Eosinophilic Esophagitis (EoE), Celiac Disease, Abdominal Pain, Constipation, Reflux, Inflammatory Bowel Disease (IBD), Crohn's Disease, Ulcerative Colitis, Feeding Problems, Functional Abdominal Pain, Irritable Bowel Syndrome (IBS), Fecal Microbiota Transplant (FMT)



Kimberley A. Chien, MD

505 East 70th Street, Helmsley Medical Tower, 3rd Floor
New York, NY 10021
PHONE: 646-962-3869
FAX: 646-962-0246

EXPERTISE: Transitioning Adolescents with Chronic GI Disorders, Inflammatory Bowel Disease (IBD), Crohn's Disease, Ulcerative Colitis, Celiac Disease, Eosinophilic Esophagitis (EoE), Nutrition and Feeding Disorders, Irritable Bowel Syndrome (IBS), Gastroesophageal Reflux, Constipation



Thomas Ciecierrega, MD

505 East 70th Street, Helmsley Medical Tower, 3rd Floor
New York, NY 10021
PHONE: 646-962-3869
FAX: 646-962-0246

EXPERTISE: Motility Problems, Feeding Problems, Constipation, Reflux, Eosinophilic Esophagitis (EoE), Inflammatory Bowel Disease (IBD)



Neera Gupta, MD, MAS

505 East 70th Street, Helmsley Medical Tower, 3rd Floor
New York, NY 10021
PHONE: 646-962-3869
FAX: 646-962-0246

EXPERTISE: Inflammatory Bowel Disease (IBD), Crohn's Disease, Ulcerative Colitis, Statural Growth in IBD, Sex Differences in IBD, Effects of Chronic Inflammation on Statural Growth

Gastroenterology and Nutrition, Continued



Tara Patten, RN

Clinical Practice Nurse

505 East 70th Street, Helmsley Medical Tower, 3rd Floor
New York, NY 10021

PHONE: 646-962-3869

FAX: 646-962-0246

EXPERTISE: Pediatric Gastroenterology



Aliza Solomon, DO

505 East 70th Street, Helmsley Medical Tower, 3rd Floor
New York, NY 10021

PHONE: 646-962-3869

FAX: 646-962-0246

EXPERTISE: Eosinophilic Esophagitis (EoE), Inflammatory Bowel Disease (IBD), Crohn's Disease, Ulcerative Colitis, Celiac Disease, Food Allergy, Feeding Problems, Jaundice, Constipation, Gastroesophageal Reflux Disease (GERD)

General Surgery



Nitsana A. Spigland, MD

Chief, Pediatric General Surgery

520 East 70th Street, L-718
New York, NY 10065

PHONE: 212-746-5648

FAX: 212-746-3884

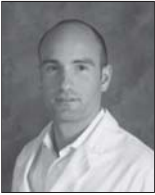
EXPERTISE: Pediatric Surgery, Pediatric Surgical Oncology, Pediatric Thoracic Surgery, Neonatal Congenital Malformations, Advanced Minimal Access Surgery, Pediatric Gastrointestinal and Hepatobiliary Malignancy, Complex Anorectal Malformation, Pediatric Inflammatory Bowel Disease (IBD), Choledochal Cyst, Pediatric Laparoscopic Surgery, Imperforate Anus, Intestinal/Esophageal Atresia, Tracheoesophageal Fistula, Hirschsprungs Disease, Pediatric Surgery Consult



Edmund Kessler, MB, BCh

520 East 70th Street, L-718
New York, NY 10065
PHONE: 212-535-3202
FAX: 516-498-9005

EXPERTISE: Pediatric Surgery, Neonatal Surgery, Pediatric Surgical Oncology, Abdominal Wall Hernia Surgery, Counseling for Antenatal Congenital Abnormalities, Pediatric Endocrine and Thyroid Surgery, Pediatric Minimal Access Surgery, Provision of Second Pediatric Surgical Opinion, Counseling for Antenatal Congenital Abnormalities, Pediatric Endocrine Surgery



Demetri J. Merianos, MD

520 East 70th Street, L-718
New York, NY 10065
PHONE: 212-746-5247
FAX: 212-746-3884

EXPERTISE: Pediatric Surgery, Pediatric Thoracic Surgery, Pediatric Head and Neck Surgery, Pediatric Surgical Oncology, Minimally Invasive Pediatric Surgery, Neonatal and Congenital Anomalies, Hirschsprung's Disease, Pediatric Gastrointestinal Surgery, Esophageal Atresia



Stephen Oh, MD

520 East 70th Street, L-718
New York, NY 10065
PHONE: 212-746-9744
FAX: 212-746-3884

56-45 Main Street
Flushing, NY 11355
PHONE: 718-670-1238

EXPERTISE: Pediatric Surgery, Neonatal Surgery, Pediatric Head and Neck Surgery, Pediatric and Neonatal Thoracic Surgery, Pediatric Surgical Oncology, Prenatal Surgical Consultation, Hirschsprung's Disease, Minimally Invasive Pediatric Surgery, Anorectal Malformations, Pediatric GI Surgery, Pediatric Chest Surgery, Prenatal Congenital Abnormality Counseling

General Surgery, Continued



Shaun A. Steigman, MD

520 East 70th Street, L-718
New York, NY 10065
PHONE: 212-746-5688
FAX: 212-746-3884

EXPERTISE: Neonatal Surgery, Pediatric Gastrointestinal Surgery, Inflammatory Bowel Disease (IBD), Thoracic Surgery, Pediatric Surgical Oncology, Pediatric Trauma, Prenatal Counseling of Congenital Surgical Disorders, Tracheoesophageal Fistula, Esophageal Atresia, Complex Anorectal Malformations, Pediatric Minimal Access Surgery

Genetics



Christopher M. Cunniff, MD

Chief, Medical Genetics
505 East 70th Street, Helmsley Medical Tower, 3rd Floor
New York, NY 10021
PHONE: 646-962-2205
FAX: 646-962-0273

EXPERTISE: Birth Defect Syndromes, Disorders of Sexual Development, Muscular Dystrophy, Fetal Alcohol Syndrome, Autism Spectrum Disorders, Intellectual Disability



Jennifer Bassetti, MD

505 East 70th Street, Helmsley Medical Tower, 3rd Floor
New York, NY 10021
PHONE: 646-962-2205
FAX: 646-962-0273

EXPERTISE: Clinical Genetics, Genetics Testing, Chromosomal Disorders, Dysmorphology, Congenital Anomalies, Autism Spectrum Disorders, Developmental Delays, Intellectual Disability



Katherine Bergstrom, MS, CGC

Genetic Counselor
505 East 70th Street, Helmsley Medical Tower, 3rd Floor
New York, NY 10021
PHONE: 646-962-2205
FAX: 646-962-0273

EXPERTISE: Clinical Genetics



Carolyn Brown, MS, CGC

Genetic Counselor

505 East 70th Street, Helmsley Medical Tower, 3rd Floor
New York, NY 10021

PHONE: 646-962-2205

FAX: 646-962-0273

EXPERTISE: Clinical Genetics



Lilian L. Cohen, MD

505 East 70th Street, Helmsley Medical Tower, 3rd Floor
New York, NY 10021

PHONE: 646-962-2205

FAX: 646-962-0273

EXPERTISE: Genetic Testing, Genetic Counseling, Birth Defect, Heart Defect, Developmental Disorders, Growth Disorder, Failure to Thrive, Twin Pregnancy

Gynecology, Adolescent



Rony T. Elias, MD

657 Main Street
Mt. Kisco, NY 10504

PHONE: 914-242-3700

FAX: 914-666-2950

EXPERTISE: Infertility, Polycystic Ovaries, Minimally Invasive GYN Surgery, Irregular Period, Egg Freezing



Isaac Kligman, MD

1305 York Avenue
New York, NY 10021

PHONE: 646-962-3814

FAX: 646-962-0311

EXPERTISE: Adolescent Gynecology, Management of Menstrual Disorders, Polycystic Ovary, Contraception, Prevention, Diagnosis and Management of Sexually Transmitted Diseases

Gynecology, Adolescent, Continued



Susan E. Loeb-Zeitlin, MD

428 East 72nd Street, Suite 200
New York, NY 10021
PHONE: 646-962-4900
FAX: 646-962-3168

EXPERTISE: Adolescent Gynecology, Pap Smear, Contraception, Prevention and Treatment of Sexually Transmitted Diseases, HPV



Margaret M. Polaneczky, MD, MS

525 E 68th Street J-130
New York, NY 10065
PHONE: 212-746-7844
FAX: 212-746-7886

EXPERTISE: Pap Smear, Family Planning, Premenstrual Syndrome, Fibroids, Cervical Dysplasia, Menstrual Disorder



Glenn L. Schattman, MD, FACOG

1305 York Avenue, 6th Floor
New York, NY 10021
PHONE: 646-962-3836
FAX: 646-962-0307

EXPERTISE: Disorders of Sexual Development, Correction of Uterine and Vaginal Anomalies

Hematology-Oncology



Sujit Sheth, MD

Chief, Pediatric Hematology/Oncology
525 East 68th Street, P-695
New York, NY 10065
PHONE: 212-746-3400
FAX: 212-746-8609

SPECIAL EXPERTISE: Iron Disorders, Thalassemia, Hemoglobinopathies



Alexander Aledo, MD

525 East 68th Street, P-695
New York, NY 10065
PHONE: 212-746-3400
FAX: 212-746-8609

SPECIAL EXPERTISE: Leukemias and Lymphomas, Solid Tumors, General Oncology



James B. Bussel, MD

525 East 68th Street, P-695
New York, NY 10065
PHONE: 212-746-3400
FAX: 212-746-5121

SPECIAL EXPERTISE: Platelet Disorders, Idiopathic Thrombocytopenic Purpura (ITP)



Nicole Kucine, MD

525 East 68th Street, P-695
New York, NY 10065
PHONE: 212-746-3400
FAX: 212-746-8609

SPECIAL EXPERTISE: Thrombotic Disorders, Hemoglobinopathies, Sickle Cell Anemia, Myeloproliferative Disorders, White Blood Cell Disorders



Catherine E. McGuinn, MD

525 East 68th Street, P-695
New York, NY 10065
PHONE: 212-746-3400
FAX: 212-746-8609

SPECIAL EXPERTISE: Thrombosis, Bleeding Disorders, Hemophilia, von Willebrand Disease



W. Beau Mitchell, MD

525 East 68th Street, P-695
New York, NY 10065
PHONE: 212-746-3400
FAX: 212-746-8609

SPECIAL EXPERTISE: Platelet Disorders, Coagulation Disorders

Hematology-Oncology, Continued



Lisa G. Roth, MD

525 East 68th Street, P-695
New York, NY 10065
PHONE: 212-746-3400
FAX: 212-746-8609

SPECIAL EXPERTISE: Lymphomas, Pediatric Oncology

Hospitalist - General Inpatient



Susan B. Bostwick, MD, MBA

*Executive Vice Chair of Education and Administration, Pediatrics
Chief, Division of General Academic Pediatrics*
525 East 68th Street, M-610
New York, NY 10065
PHONE: 212-746-3131
FAX: 212-746-8458

EXPERTISE: Inpatient General Pediatrics, Burn Consult



Erika Abramson, MD, MSc

525 East 68th Street, M-610
New York, NY 10065
PHONE: 212-746-3131
FAX: 212-746-8458

EXPERTISE: Well Baby, Inpatient General Pediatrics, Burn Consult



Jennifer I. DiPace, MD

Director, Pediatric Graduate Medical Education
525 East 68th Street, M-610
New York, NY 10065
PHONE: 212-746-3131
FAX: 212-746-8458

EXPERTISE: Well Baby, Inpatient General Pediatrics, Burn Consult



Allison Gorman, MD

525 East 68th Street, M-610
New York, NY 10065
PHONE: 212-746-3131
FAX: 212-746-8458

EXPERTISE: Well Baby

Hospitalist - General Inpatient, Continued



Cori M. Green, MD, MSc

525 East 68th Street, M-628

New York, NY 10065

PHONE: 212-746-3131

FAX: 212-746-8458

EXPERTISE: Inpatient General Pediatrics, Burn Consult



Elisa P. Hampton, MD

Director, Pediatric Hospitalist Program, NYP/Lower Manhattan Hospital

525 East 68th Street, M-610

New York, NY 10065

PHONE: 212-746-3131

FAX: 212-746-8458

170 William Street

New York, NY 10038

PHONE: 212-312-5000

EXPERTISE: Inpatient General Pediatrics, Well Baby



MacKenzie N. Hillard, MD

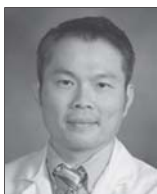
525 East 68th Street, M-610

New York, NY 10065

PHONE: 212-746-3131

FAX: 212-746-8458

EXPERTISE: Well Baby, Inpatient General Pediatrics, Burn Consult



Thanakorn Jirasevijinda, MD

Director, Pediatric Undergraduate Medical Education

525 East 68th Street, M-610

New York, NY 10065

PHONE: 212-746-3131

FAX: 212-746-8458

EXPERTISE: Inpatient General Pediatrics, Burn Consult, Cultural/Transcultural Issues

Hospitalist - General Inpatient, Continued



Jennie G. Ono, MD

525 East 68th Street, M-610
New York, NY 10065
PHONE: 212-746-3131
FAX: 212-746-8458

EXPERTISE: Inpatient General Pediatrics, Burn Consult



S. Nena Osorio, MD

Medical Director, General Inpatient Pediatrics
525 East 68th Street, M-610
New York, NY 10065
PHONE: 212-746-3131
FAX: 212-746-8458

EXPERTISE: Inpatient General Pediatrics, Burn Consult, Family Centered Care



Rebecca Scott, MD

525 East 68th Street, M-610
New York, NY 10065
PHONE: 212-746-3131
FAX: 212-746-8458

EXPERTISE: Well Baby



Brooke I. Spector, MD

525 East 68th Street, M-610
New York, NY 10065
PHONE: 212-746-3131
FAX: 212-746-8458

EXPERTISE: Well Baby, Inpatient General Pediatrics, Burn Consult

Hospitalist - NYP/Lower Manhattan



Bhumika Desai, MD

170 William Street
New York, NY 10038
PHONE: 212-312-5000

525 East 68th Street, M-610
New York, NY 10065
PHONE: 212-746-3131

EXPERTISE: General Pediatrics - Emergency Department, Well Baby - Labor & Delivery



Erik Dienna, MD

170 William Street
New York, NY 10038
PHONE: 212-312-5000

EXPERTISE: General Pediatrics - Emergency Department, Well Baby - Labor & Delivery



Duncan Hau, MD

170 William Street
New York, NY 10038
PHONE: 212-312-5000

525 East 68th Street, M-610
New York, NY 10065
PHONE: 212-746-3131

EXPERTISE: General Pediatrics - Emergency Department, Well Baby - Labor & Delivery



Katherine Barth Huston, MD

170 William Street
New York, NY 10038
PHONE: 212-312-5000

525 East 68th Street, M-610
New York, NY 10065
PHONE: 212-746-3131

EXPERTISE: General Pediatrics - Emergency Department, Well Baby - Labor & Delivery

Hospitalist - NYP/Lower Manhattan, Continued



Mary Kathleen Keown, MD

170 William Street
New York, NY 10038
PHONE: 212-312-5000

525 East 68th Street, M-610
New York, NY 10065
PHONE: 212-746-3131

EXPERTISE: General Pediatrics - Emergency Department, Well Baby - Labor & Delivery



Matthew Marks, MD

170 William Street
New York, NY 10038
PHONE: 212-312-5000

525 East 68th Street, M-610
New York, NY 10065
PHONE: 212-746-3131

EXPERTISE: General Pediatrics - Emergency Department, Well Baby - Labor & Delivery



Kristin Olsen, MD

170 William Street
New York, NY 10038
PHONE: 212-312-5000

525 East 68th Street, M-610
New York, NY 10065
PHONE: 212-746-3131

EXPERTISE: General Pediatrics - Emergency Department, Well Baby - Labor & Delivery



Deepa Patel, MD

170 William Street
New York, NY 10038
PHONE: 212-312-5000

EXPERTISE: General Pediatrics - Emergency Department, Well Baby - Labor & Delivery

Hospitalist - NYP/Lower Manhattan, Continued



Evita Recio, MD

170 William Street
New York, NY 10038
PHONE: 212-312-5000

EXPERTISE: General Pediatrics - Emergency Department, Well Baby -
Labor & Delivery



Janet Rivera, MD

170 William Street
New York, NY 10038
PHONE: 212-312-5000

EXPERTISE: General Pediatrics - Emergency Department, Well Baby -
Labor & Delivery



Normaliz Rodriguez, MD

170 William Street
New York, NY 10038
PHONE: 212-312-5000

525 East 68th Street, M-610
New York, NY 10065

PHONE: 212-746-3131

EXPERTISE: General Pediatrics - Emergency Department, Well Baby -
Labor & Delivery



Rachelle Tibbetts, MD

170 William Street
New York, NY 10038
PHONE: 212-312-5000

EXPERTISE: General Pediatrics - Emergency Department, Well Baby -
Labor & Delivery

Infectious Diseases



Patricia A. DeLaMora, MD

505 East 70th Street, Helmsley Medical Tower, 3rd Floor
New York, NY 10021
PHONE: 646-962-6845
FAX: 646-962-0259

EXPERTISE: Complicated Infections, Bacterial Infection, Bone and Joint Infection, Infectious Disease, Lyme Disease, Sinusitis, Tonsillitis, Viral Infection, Tuberculosis



Christine M. Salvatore, MD

505 East 70th Street, Helmsley Medical Tower, 3rd Floor
New York, NY 10021
PHONE: 646-962-6845
FAX: 646-962-0259

EXPERTISE: Pediatric Infectious Diseases, Pneumonia, Opportunistic Infection, Respiratory Infection, Infectious Disease in Immune Disorders, Pediatric HIV, Fungal Infections, Bacterial Infection



Sima S. Toussi, MD

505 East 70th Street, Helmsley Medical Tower, 3rd Floor
New York, NY 10021
PHONE: 646-962-6845
FAX: 212-746-8716

EXPERTISE: Pediatric Infectious Diseases, Pediatric/Adolescent HIV, Opportunistic Infection, Bone and Joint Infection

Neonatology



Jeffrey M. Perlman, MB, ChB

Chief, Newborn Medicine
525 East 68th Street, N-506
New York, NY 10065
PHONE: 212-746-3530
FAX: 212-746-8608

EXPERTISE: Neonatal-Perinatal Medicine, Neonatal Intensive Care, Neonatal Neurology, Neonatal Resuscitation, Newborn Neurodevelopmental Follow-up, Simulation



Catherine Chang, MD

525 East 68th Street
New York, NY 10065
PHONE: 212-746-3530
FAX: 212-746-8608

EXPERTISE: Newborn Medicine, Neonatal Resuscitation



Alan Groves, MD

525 East 68th Street, N-506
New York, NY 10065
PHONE: 212-746-3530
FAX: 212-746-8608

EXPERTISE: Echocardiography, Cardiac Magnetic Resonance Imaging, Circulatory Function in Newborn Infants



Ericalyn Kasdorf, MD

525 East 68th Street, N-506
New York, NY 10065
PHONE: 212-746-3530
FAX: 212-746-8608

EXPERTISE: Neonatal-Perinatal Medicine, Newborn Medicine, Premature Infant Care, Neurodevelopmental Follow-up



Matthew A. Rainaldi, MD

525 East 68th Street, N-506
New York, NY 10065
PHONE: 212-746-3530
FAX: 212-746-8608

EXPERTISE: Neonatal-Perinatal Medicine, Premature Infant Care, Newborn Medicine



Gail S. Ross, PhD

525 E. 68th Street, N-506
New York, NY 10065
PHONE: 212-746-3530
FAX: 212-746-8608

EXPERTISE: Neurodevelopmental Testing, Child and Adolescent Psychology, Clinical Neurophysiology, Learning Disabilities, Neuropsychological Assessment, Behavior Therapy, Attention Deficit Disorder, Autism, Psychological Assessment

Neonatology, Continued



Vivien L. Yap, MD

525 East 68th Street, N-506
New York, NY 10065
PHONE: 212-746-3530
FAX: 212-746-8608

EXPERTISE: Neonatal-Perinatal Medicine

Neonatology - NYP/Lower Manhattan



Rachid Benjelloun, MD

170 William Street
New York, NY 10038
PHONE: 212-746-5000

EXPERTISE: Neonatology, Newborn Medicine



Aimee M. Parow, MD

170 William Street
New York, NY 10038
PHONE: 212-746-5000

EXPERTISE: Neonatology, Newborn Medicine

Nephrology and Kidney Transplantation



Eduardo M. Perelstein, MD, MPH

Chief, Pediatric Nephrology
505 East 70th Street, Helmsley Medical Tower, 3rd Floor
New York, NY 10021
PHONE: 646-962-4324
FAX: 646-962-0246

EXPERTISE: Pediatric Nephrology, Hemolytic Uremic Syndrome,
Membranoproliferative Glomerulonephritis



Oleh Akchurin, MD, PhD

505 East 70th Street, Helmsley Medical Tower, 3rd Floor
New York, NY 10021
PHONE: 646-962-4324
FAX: 646-962-0246

EXPERTISE: Pediatric Nephrology, Growth Hormone Therapy in Children
with Chronic Kidney Disease, IgA Nephropathy, Henoch-Schonlein
Purpura Nephritis

Nephrology and Kidney Transplantation, Continued



Sandip Kapur, MD

525 East 68th Street, Starr 8
New York, NY 10021
PHONE: 212-746-5330
FAX: 212-746-8720

EXPERTISE: Transplantation, Living Donor Kidney Transplantation, Minimally Invasive Surgery



Juhi Kumar, MD, MPH

505 East 70th Street, Helmsley Medical Tower, 3rd Floor
New York, NY 10021
PHONE: 646-962-4324
FAX: 646-962-0246

EXPERTISE: Pediatric Nephrology, Bone and Mineral Disorders, Growth in Children with Kidney Transplant, Transplant Outcomes



Hridya Suman, MD, MS

505 East 70th Street, Helmsley Medical Tower, 3rd Floor
New York, NY 10021
PHONE: 646-962-4324
FAX: 646-962-0246

EXPERTISE: Pediatric Nephrology, Ambulatory Blood Pressure Monitoring, Complications of Nephrotic Syndrome

Neurology



Barry E. Kosofsky, MD, PhD

Chief, Child Neurology
505 East 70th Street, Helmsley Medical Tower, 3rd Floor
New York, NY 10021
PHONE: 212-746-3278
FAX: 212-746-8137

EXPERTISE: Pediatric Neurology, Prenatal Diagnosis, Prenatal Drug Exposure, Developmental Disorders, Fetal Brain Disorders

Neurology, Continued



Murray Engel, MD

505 East 70th Street, Helmsley Medical Tower, 3rd Floor
New York, NY 10021
PHONE: 212-746-3278
FAX: 212-746-8137

EXPERTISE: Pediatric Neurology, Neurodevelopmental Disabilities, Clinical Neurophysiology, Pediatric Epilepsy



Zachary Grinspan, MD, MS

505 East 70th Street, Helmsley Medical Tower, 3rd Floor
New York, NY 10021
PHONE: 212-746-3278
FAX: 212-746-8137

EXPERTISE: Pediatric Neurology, Pediatric Epilepsy, Neurogenetics



Sabiha R. Merchant, MBBS

505 East 70th Street, Helmsley Medical Tower, 3rd Floor
New York, NY 10021
PHONE: 212-746-3278
FAX: 212-746-8137

26-19 Francis Lewis Blvd, 2nd Floor
Bayside, Queens, 11358
PHONE: 917-745-3030

50-54 Main Street Children's Center
Flushing, NY 11355
PHONE: 718-670-1800

EXPERTISE: Pediatric Neurology, Tic Disorders, Pediatric Movement Disorders, Tourette's Syndrome, Neurometabolic Disorder, Neurogenetics



Mary E. Montgomery, MS, RD, CDN

Pediatric Dietitian

505 East 70th Street, Helmsley Medical Tower, 3rd Floor
New York, NY 10021
PHONE: 212-746-3278
FAX: 212-746-8137

EXPERTISE: Diets for Seizures (Ketogenic, Modified Atkins and Low Glycemic Index)



Praveen Raju, MD, PhD

505 East 70th Street, Helmsley Medical Tower, 3rd Floor
New York, NY 10021

PHONE: 212-746-3278

FAX: 212-746-8137

EXPERTISE: Pediatric Neurology, Pediatric Neuro-Oncology



Gail E. Solomon, MD

Emerita

505 East 70th Street, Helmsley Medical Tower, 3rd Floor
New York, NY 10021

PHONE: 212-746-3278

FAX: 212-746-8137

EXPERTISE: Pediatric Neurology, Pediatric Epilepsy, Clinical Neurophysiology, Seizure Disorder

Neuroradiology



Linda A. Heier, MD

520 East 70th Street, F-039
New York, NY 10065

PHONE: 212-746-2581

FAX: 212-746-8046

EXPERTISE: Pediatric Neuroradiology, Neuro/Interventional Radiology

Neurosurgery



Mark M. Souweidane, MD, FACS, FAAP

Chief, Pediatric Neurosurgery

1305 York Avenue, 9th Floor
New York, NY 10021

PHONE: 212-746-2363

FAX: 646-962-0118

156 William Street, 11th Floor
New York, NY 10038

PHONE: 212-746-2363

FAX: 646-962-0118

EXPERTISE: Endoscopic Surgery, Pineal Region Tumors, Craniosynostosis, Vascular Malformations, Brain and Spinal Cord Tumors

Neurosurgery, Continued



Jeffrey P. Greenfield, MD, PhD

1305 York Avenue, 9th Floor
New York, NY 10021
PHONE: 212-746-2363
FAX: 646-962-0118

EXPERTISE: Chiari Malformation, Endoscopic Skull Base Surgery, Spasticity, Brain and Spinal Cord Tumors



Therese Haussner, MS, PA-C

525 East 68th Street
New York, NY 10065
PHONE: 212-746-2378

EXPERTISE: Pediatric Neurosurgery, Neuro-oncology, Craniofacial



Caitlin E. Hoffman, MD

1305 York Avenue, 9th Floor
New York, NY 10021
PHONE: 212-746-2363
FAX: 212-746-7729

Bayside Pediatric Specialty Care, 26-19 Francis Lewis Blvd
Bayside, NY 11358
PHONE: 212-746-2363
FAX: 212-746-7729

EXPERTISE: Epilepsy Surgery, Prenatal Congenital Malformations, Brain and Spinal Cord Tumors



Maureen Schaefer, RN, BSN

Craniofacial Clinical Coordinator
525 East 68th Street, Rm 2207
New York, NY 10065
PHONE: 212-746-1274

Ophthalmology



Richard L. Levy, MD

Director, Pediatric Ophthalmology and Strabismus
1305 York Avenue, 11th Floor
New York, NY 10021
PHONE: 646-962-2020
FAX: 646-962-0609

EXPERTISE: Pediatric Ophthalmology, Pediatric Cataract Surgery, Strabismus Surgery In Children and Adults, Pediatric Strabismus, Amblyopia, Double Vision, Lazy Eye



Jennifer Ciralsky, MD

1305 York Avenue, 11th Floor
New York, NY 10021
PHONE: 646-962-2020
FAX: 646-962-0609

EXPERTISE: Pediatric and Adult Cornea, Comprehensive/General Eye Care Surgery, Cataract Surgery, Corneal Disease, Corneal Surgery, Refractive Surgery, Laser Vision Correction, Clinical Research/Clinical Trial, Blurry Vision/Decreased Vision, Dry Eyes, Tearing Eye/Watery Eye, Red Eye, Conjunctivitis



Erica Oltra, MD

1305 York Avenue, 11th Floor
New York, NY 10021
156 William Street, 12th Floor
New York, NY 10038
PHONE: 646-962-2020
FAX: 646-962-0609

EXPERTISE: Amblyopia, Pediatric Cataract and Anterior Segment, Adult Strabismus, Double Vision, Cranial Nerve Palsies, Pediatric Ophthalmology

Ophthalmology, Continued



Anton Orlin, MD

1305 York Avenue, 11th Floor
New York, NY 10021

156 William Street, 12th Floor
New York, NY 10038

PHONE: 646-962-2020

FAX: 646-962-0609

EXPERTISE: Pediatric Retina Problems, Retinal Surgery



Mrinali Patel Gupta, MD

1305 York Avenue, 11th Floor
New York, NY 10021

PHONE: 646-962-2020

FAX: 646-962-0609

EXPERTISE: Retinopathy of Prematurity, Retinal Surgery, Diseases of the Retina and Vitreous

Orthopedics



Roger F. Widmann, MD

Chief, Pediatric Orthopedic Surgery

Hospital for Special Surgery, 535 East 70th Street, 5th Floor
New York, NY 10021

PHONE: 212-606-1325

FAX: 212-717-0673

EXPERTISE: Pediatric Orthopedic Surgery, Scoliosis, Hip Dysplasia, Pediatric Orthopedic Trauma, Pediatric Limb-Lengthening



John S. Blanco, MD

Hospital for Special Surgery, 535 East 70th Street, 5th Floor
New York, NY 10021

PHONE: 646-797-8366

FAX: 646-797-8361

EXPERTISE: Pediatric Orthopedic Surgery, Pediatric Spinal Deformity, Pediatric Fractures, Neuromuscular Conditions, Cerebral Palsy, Myelomeningocele



Aaron Daluiski, MD

East River Professional Building, 523 East 72nd Street, 4th Floor
New York, NY 10021
PHONE: 212-606-1284
FAX: 212-288-8260

EXPERTISE: Pediatric Orthopedic Surgery, Hand, Wrist and Elbow Disorders, Fractures of the Upper Extremity, Carpal Tunnel Syndrome, Arthritis of the Upper Extremity, Elbow Pain, Pediatric Hand Surgery



Emily R. Dodwell, MD, MPH, FRCSC

Hospital for Special Surgery, 535 East 70th Street, 5th Floor
New York, NY 10021
PHONE: 212-606-1451
FAX: 212-774-7065

EXPERTISE: Pediatric Orthopedic Surgery, Trauma of the Upper and Lower Extremities, Lower Extremity Reconstruction, Limb Length Discrepancy, Congenital and Acquired Deformities, Neuromuscular Conditions, Limb Deformity, Cerebral Palsy



Shevaun Mackie Doyle, MD

Hospital for Special Surgery, 535 East 70th Street, 5th Floor
New York, NY 10021
PHONE: 646-797-8816
FAX: 646-797-8836

EXPERTISE: Pediatric Orthopedic Surgery, General Pediatric Orthopedics, Pediatric Orthopedic Trauma, Pediatric and Adolescent Metabolic Bone Disease, Scoliosis



David W. Green, MD, MS, FAAP, FACS

Hospital for Special Surgery, 535 East 70th Street, 5th Floor
New York, NY 10021
PHONE: 212-606-1631
FAX: 212-774-2776

EXPERTISE: Pediatric Orthopedic Surgery, Pediatric Sport Injuries, Pediatric Knee Surgery, Pediatric Orthopedic Trauma, Pediatric Knee Arthroscopy, Arthroscopic Surgery for Discoid Meniscus, Osteochondritis Dissecans, Tibial Spine Fractures & Patella Dislocations, Fractures and Patella Dislocations, Growth Plate Sparing ACL Surgery, Implant Mediated Guided Growth for Knock Knees or Bowlegs, Pediatric Growth Plate Surgery, Pediatric Fractures, Osteogenesis Imperfecta: Telescoping Intra-medullary Nail Technique, Growth Plate Fractures

Orthopedics, Continued



Cathleen L. Raggio, MD

333 Earle Ovington Blvd, Suite 106
New York, NY 11553
PHONE: 212-606-1339
FAX: 516-941-2052

EXPERTISE: Pediatric Orthopedic Surgery



David M. Scher, MD

Hospital for Special Surgery, 535 East 70th Street, 5th Floor
New York, NY 10021
PHONE: 212-606-1253
FAX: 212-774-2581

EXPERTISE: Pediatric Orthopedic Surgery, Children's Foot Disorders, Clubfoot, Cerebral Palsy, Pediatric Trauma and Fractures, Pediatric Hip Disorders, Hip Dysplasia, Gait Analysis



Ernest L. Sink, MD

Hospital for Special Surgery, 541 East 71st Street, Ground Floor
New York, NY 10021
PHONE: 212-606-1268
FAX: 212-606-1685

EXPERTISE: Pediatric Orthopedic Surgery, Hip Preservation Surgery, Pediatric Hip Disorders and Trauma, Hip Pain in Adolescents and Young Adults, Hip Dysplasia in Infants to Young Adults, Hip Osteotomies, Ganz or Periacetabular Osteotomy (PAO), Surgical Hip Dislocation, Hip Arthroscopy

Otolaryngology



Vikash K. Modi, MD

Chief, Pediatric Otolaryngology
428 East 72nd Street, Suite 100
New York, NY 10021
2315 Broadway
New York, NY 10024
PHONE: 646-962-3017
FAX: 212-746-8124

EXPERTISE: Pediatric Otolaryngology, Tonsil and Adenoid Disease, Pediatric Ear Disease, Pediatric Airway Disease/Reconstruction, Cleft Palate, Velopharyngeal Insufficiency (VPI), Pediatric Voice Disorders



Alison M. Maresh, MD

428 East 72nd Street, Suite 100
New York, NY 10038

156 William Street, 12th Floor
New York, NY 10038

PHONE: 646-962-2225

FAX: 212-746-8124

EXPERTISE: Pediatric Otolaryngology, Advanced Endoscopic Management of Airway Disorders, Pediatric Hearing Loss, Pediatric Voice Disorders, Pediatric Airway Disease, Tonsil and Adenoid Problems, Pediatric Obstructive Sleep Apnea, Pediatric Ear Disease, Hearing Loss, Pediatric Head and Neck Tumors

Psychiatry



John T. Walkup, MD

Chief, Child and Adolescent Psychiatry

525 East 68th Street, F-1109
New York, NY 10065

PHONE: 212-746-1891

FAX: 212-746-5944

EXPERTISE: Child & Adolescent Psychiatry, Tourette's Syndrome, Obsessive Compulsive Disorder (OCD), Mood Disorder, Refractory Psychiatric Disorders



Shannon Bennett, PhD

525 East 68th Street
New York, NY 10065

PHONE: 646-962-2820

FAX: 212-746-5944

EXPERTISE: Child and Adolescent Psychiatry, Psychotherapy, Anxiety, Tourettes Syndrome, Post Traumatic Stress Disorder (PTSD), Obesity, Group Therapy, Behavior Therapy, Cognitive-Behavior Therapy (CBT), Trichotillomania, Tic Disorder, Bereavement, Obsessive Compulsive Disorder (OCD), Family Therapy



Breck Borcharding, MD

21 Bloomingdale Road
White Plains, NY 10605

PHONE: 914-997-5933

EXPERTISE: Child and Adolescent Psychiatry, General Psychiatry, Developmental Disorders

Psychiatry, Continued



Angela Chiu, MD

315 East 62nd Street, 5th Floor
New York, NY 10065
PHONE: 646-962-2820

156 William Street, 11th Floor
New York, NY 10038
PHONE: 646-962-2820

EXPERTISE: Cognitive-Behavior Therapy (CBT), Social Anxiety Disorder, Panic Disorder, Obsessive Compulsive Disorder (OCD), Selective Mutism, Depression, Group Therapy, Anxiety Disorder, Separation Anxiety, Generalized Anxiety Disorder, Specific Phobia, Parenting Issues, Post Traumatic Stress Disorder (PTSD), Behavior Therapy



Mia G. Cohen, MD

21 Bloomingdale Road
White Plains, NY 10605
PHONE: 914-997-5204

EXPERTISE: Depression, Generalized Anxiety Disorder, Separation Anxiety, Substance Abuse, Disruptive Behavior, Bipolar Disorder, Social Anxiety Disorder, Obsessive Compulsive Disorder (OCD), Attention Deficit Hyperactivity Disorder (ADHD), Tic Disorder, Schizophrenia, Personality Disorder, Eating Disorder, Borderline Personality Disorder, Post Traumatic Stress Disorder (PTSD), Autism Spectrum Disorder



Ashley K. Crumby, MD

21 Bloomingdale Road, 6A North/419
White Plains, NY 10605
PHONE: 914-997-5984
FAX: 914-682-6988

EXPERTISE: Child and Adolescent Psychiatry, Obsessive-Compulsive Disorder (OCD), Attention Deficit Hyperactivity Disorder (ADHD), Generalized Anxiety Disorder, Psychotic Disorders, Depression, Post Traumatic Stress Disorder (PTSD), Adult ADHD



Helen T. Ding, MD

21 Bloomingdale Road, Nichols/104
White Plains, NY 10605
PHONE: 914-997-4336
FAX: 914-682-6988

EXPERTISE: Child and Adolescent Psychiatry



Sarah Dufek, PhD

Center for Autism and the Developing Brain
21 Bloomingdale Road, Rogers Bldg
White Plains, NY 10605
PHONE: 914-997-5582
FAX: 914-997-4398

525 East 68th Street, F-1331
New York, NY 10605
PHONE: 914-997-5582
FAX: 212-746-5944

EXPERTISE: Child and Adolescent Psychiatry



Pamelynn Esperanza, MD

Weill Cornell Psychiatry Specialty Center, 315 East 62nd Street, 5th Flr
New York, NY 10065
PHONE: 646-962-2820
FAX: 212-746-5944

EXPERTISE: Child and Adolescent Psychiatry, Psychopharmacology,
Attention Deficit Hyperactivity Disorder (ADHD), Anxiety, Depression



Avital Falk, PhD

Weill Cornell Psychiatry Specialty Center, 315 East 62nd Street, 5th Flr
New York, NY 10065
PHONE: 646-962-2820
FAX: 212-746-5944

EXPERTISE: Psychology, Child and Adolescent Psychiatry, Psychotherapy,
Obsessive Compulsive Disorder (OCD), Social Anxiety, Generalized
Anxiety, Separation Anxiety, Panic Disorder, Specific Phobia, Selective
Mutism, Parent Education, Depression, Cognitive-Behavior Therapy
(CBT), Trichotillomania, Post Traumatic Stress Disorder (PTSD), Behavior
Therapy



Chaya B. Gopin, PhD, ABPP-CN

525 East 68th Street
New York, NY 10065
PHONE: 646-962-2820

EXPERTISE: Clinical Neuropsychology, Attention Deficit Hyperactivity
Disorder (ADHD), Learning Disabilities, Dementia, Psychiatric Disorder,
Neurological Disorder

Psychiatry, Continued



Michael B. Grody, MD

230 E. 69th Street
New York, NY 10021
PHONE: 212-828-4888

EXPERTISE: Psychopharmacology, Psychodynamic Psychotherapy, Mood Disorder, Attention Deficit Hyperactivity Disorder (ADHD), Tic Disorder, Family Relationship Problem, Cognitive-Behavior Therapy (CBT), Anxiety Disorder, Obsessive Compulsive Disorder (OCD), Developmental Disorder, Relationship Problems



Jo R. Hariton, PhD

NYP/Westchester
21 Bloomingdale Road, COPD/207B
White Plains, NY 10605
PHONE: 914-997-5957
FAX: 914-682-6988

EXPERTISE: Child/Adolescent Psychology, Psychology, Mood Disorders, Parenting Issues, Attention Deficit Disorder (ADD), Anxiety Disorders, Depression, Attention Deficit Hyperactivity Disorder (ADHD), Children of Divorce



Despina Hatziergati, MD

21 Bloomingdale Road
White Plains, NY 10605
PHONE: 914-997-8673

EXPERTISE: Child and Adolescent Psychiatry



Margaret E. Hertzog, MD

525 East 68th Street
New York, NY 10065
PHONE: 212-746-5712

EXPERTISE: General Psychiatry, Psychopharmacology, Adolescent Psychiatry, Developmental Disorder, Attention Deficit Disorder (ADD), Autism, Attention Deficit Disorder of Adult, Parenting Issues



Marisela Huerta, PhD

21 Bloomingdale Road
White Plains, NY 10605
PHONE: 914-997-9848

EXPERTISE: Autism Spectrum Disorder (ASD)



Megan Hughes-Feltenberger, PhD

NYP/Westchester,
21 Bloomingdale Road, AOPD/203A
White Plains, NY 10605
PHONE: 914-997-8688
FAX: 914-682-6988

EXPERTISE: Adolescent Psychiatry, Obsessive-Compulsive Disorder, Panic Disorder, Agoraphobia, Trichotillomania, Specific Phobia, Social Phobia, Separation Anxiety, Hoarding Behavior, Mood Disorders, Anxiety Disorder



Annie Li, MD

525 East 68th Street, Baker 11
New York, NY 10065
PHONE: 212-746-3864

156 William Street, 11th Floor
New York, NY 10038
PHONE: 212-746-3864

EXPERTISE: Child and Adolescent Psychiatry, Psychopharmacology, Psychotherapy, Mood and Anxiety Disorder, Adjustment Disorder, Cultural/Transcultural Issues, Family Therapy, Young Adults, Disruptive Behavior Disorder, Divorce, Parenting Issues, Stress Management



Catherine Lord, PhD

Center for Autism and the Developing Brain
21 Bloomingdale Road, Rogers Bldg
White Plains, NY 10605
PHONE: 914-997-5848
FAX: 914-997-4398

525 East 68th Street, F-1331
New York, NY 10021
PHONE: 914-997-4398

EXPERTISE: Autism Spectrum Disorder (ASD)

Psychiatry, Continued



Cynthia Martin, PhD

Center for Autism and the Developing Brain
21 Bloomingdale Road, Rogers Bldg
White Plains, NY 10605
PHONE: 914-997-5947
FAX: 914-997-4398

EXPERTISE: Child and Adolescent Psychiatry, Neurodevelopmental Disabilities, Developmental Evaluation, Feeding Disorder of Infancy and Early Childhood, Behavioral Intervention, Neuropsychological Assessment, Psychological Assessment, Autism Spectrum Disorder, Cognitive-Behavior Therapy (CBT)



Tara Mathews, PhD

525 East 68th Street, Baker 11
New York, NY 10065
PHONE: 212-746-3552

EXPERTISE: Psychology, Pain Management, Cognitive-Behavior Therapy (CBT), Behavior Modification, Chronic Illness, Anxiety Disorder, Parent-Child Relational Problem, Encopresis, Tic Disorder, Enuresis, Tourette's Disorder, Current Non-Adherence to Medical Treatment



Anne P. McBride, MD

525 East 68th Street, Baker 11
New York, NY 10065
PHONE: 212-746-5720

EXPERTISE: General Psychiatry, Adolescent Psychiatry, Psychopharmacology, Developmental Disorder, Anxiety Disorder, Mood Anxiety Disorder, Attention Deficit Hyperactivity Disorder (ADHD), Family Therapy, Bipolar Disorder, Autism, Cognitive-Behavior Therapy (CBT), Obsessive Compulsive Disorder (OCD), Psychodynamic Psychotherapy



Jacob Messing, MD

525 East 68th Street, Baker 11
New York, NY 10065
PHONE: 646-535-0117

EXPERTISE: Child and Adolescent Psychiatry, Psychopharmacology, Cognitive-Behavior Therapy (CBT), Medication Management, Attention Deficit Hyperactivity Disorder (ADHD), Panic Disorder, Personality Disorder, Psychotherapy and Medical Illness, Bulimia, Eating Disorder, Psychodynamic Psychotherapy, Family Therapy, Anxiety and Depression, Mood Disorder, Bipolar Disorder, Parent-Child Relationship Problem, Obsessive Compulsive Disorder (OCD), Anorexia, Drug or Alcohol Abuse



Barbara L. Milrod, MD

525 East 68th Street, F-1326
New York, NY 10065
PHONE: 212-746-5868

EXPERTISE: Psychotherapy, Child and Adolescent Psychiatry, Women's Psychiatry, Anxiety Disorder, Psychoanalysis, Mood and Anxiety Disorders



Elisabeth Mitchell, PhD

Center for Autism and the Developing Brain
21 Bloomingdale Road, Rogers Bldg
White Plains, NY 10605
PHONE: 914-997-5533
FAX: 914-997-4398

EXPERTISE: Child Psychology, Child and Adolescent Psychology, Autism Spectrum Disorder, Anxiety, Cognitive-Behavior Therapy (CBT), Diagnostic Evaluation, Behavioral Intervention, Attention Deficit Hyperactivity Disorder (ADHD), Behavioral Parent Coaching



Janki Modi, MD

21 Bloomingdale Road, Nichols/106
White Plains, NY 10605
PHONE: 914-997-5208
FAX: 914-682-6988

EXPERTISE: Child and Adolescent Psychiatry

Psychiatry, Continued



Justin Mohatt, MD

Weill Cornell Psychiatry Specialty Center, 315 East 62nd Street, 5th Flr
New York, NY 10065
PHONE: 646-962-2820

EXPERTISE: Child and Adolescent Psychiatry, Psychotherapy, Anxiety Disorder, Tic Disorder, Attention Deficit Hyperactivity Disorder (ADHD), Pervasive Developmental Disorder, Obsessive Compulsive Disorder, Tourette Syndrome, Child and Adolescent Psychopharmacology



Siobhan E. O'Herron, MD

21 Bloomingdale Road, COPD/102
White Plains, NY 10605
PHONE: 914-997-8613
FAX: 914-682-6988

EXPERTISE: Child and Adolescent Psychiatry



Francheska Perepletchikova, PhD

21 Bloomingdale Road, AOPD/110A
White Plains, NY 10605
PHONE: 914-682-5464
FAX: 914-682-6988

EXPERTISE: Dialectical Behavior Therapy, Cognitive-Behavior Therapy (CBT), Parent Counseling, Suicide and Self-Inflicted Injury, Disruptive Behavior Disorder, Borderline Personality Disorder, Mood Disorder, Psychoactive Substance Use Disorder



Cynthia R. Pfeffer, MD

525 East 68th Street
New York, NY 10065
PHONE: 914-997-5849

EXPERTISE: Psychopharmacology, Adjustment Disorder With Problems at School, Anxiety, Autism Spectrum Disorder, Behavior Problem, Bereavement, Bipolar Disorder, Depression, Irritability and Anger Separation Anxiety, Problem With Child Being Bullied, Learning Disabilities, Obsessive Compulsive Disorder (OCD), Panic Attacks, Monitor Parenting Skills, Postpartum Depression, Post Traumatic Stress Disorder (PTSD), Social Phobia, Suicidal Behavior



Susan Samuels, MD

525 East 68th Street
New York, NY 10065
PHONE: 212-746-3872

EXPERTISE: Psychopharmacology, Psychosomatic Medicine, Child and Adolescent Psychiatry, Psychotherapy, Psychiatric Aspects of Physical Illness, Attention Deficit Hyperactivity Disorder (ADHD), Mood Disorder, Anxiety Disorder



Nora-Lynn F. San Diego, MD

Center for Autism and the Developing Brain
21 Bloomingdale Road, Rogers Bldg
White Plains, NY 10605
PHONE: 914-997-4392
FAX: 914-997-4398

EXPERTISE: Autism Spectrum Disorder, Anxiety Disorder, Attention Deficit Hyperactivity Disorder (ADHD), Obsessive Compulsive Disorder (OCD), Bipolar Disorder



Theodore Shapiro, MD

525 East 68th Street, F-1222
New York, NY 10065
PHONE: 212-746-5713

EXPERTISE: General Psychiatry, Psychopharmacology, Family Therapy Psychoanalysis, Anxiety Disorder, Attention Deficit Hyperactivity Disorder (ADHD), Autism, Emotional Disorder, Bipolar Disorder, Developmental Disorder, Marital Therapy, Mood Disorder, Obsessive-Compulsive Disorder (OCD), Parenting Issues, Personality Disorder, Pervasive Developmental Disorder, Psychodynamic Psychotherapy, Schizophrenia



Matthew Shear, MD

Weill Cornell Psychiatry Specialty Center, 315 East 62nd Street, 5th Flr
New York, NY 10065
PHONE: 646-962-2820

EXPERTISE: Child and Adolescent Psychiatry, Eating Disorder

Psychiatry, Continued



Alma Spaniard, MD

21 Bloomingdale Road, COPD/210B
White Plains, NY 10605
PHONE: 914-997-5998
FAX: 914-682-6988

EXPERTISE: Attention Deficit Hyperactivity Disorder (ADHD), Anxiety and Depression, Anxiety Disorder, Obsessive Compulsive Disorder, Panic Disorder, Bipolar Disorder, Mood Disorder, Attachment Disorder, Parent-Child Relationship Problem, Lesbian, Gay, Bisexual, and Transgender Issues, Sexuality Issues, Eating Disorders, Bulimia, Anorexia, Drug or Alcohol Abuse, Medication Management, Psychodynamic Psychotherapy, Family Therapy, and Psychotherapy and Medical Illness, Cognitive-Behavior Therapy (CBT)



Jeremy E. Stone, MD

21 Bloomingdale Road, AOPD/201A
White Plains, NY 10605
PHONE: 914-997-4347
FAX: 914-682-6988

EXPERTISE: Psychology, Adolescents and Adults with Severe Emotional and Behavioral Problems



Michelle L. Tricamo, MD

525 East 68th Street
New York, NY 10065
PHONE: 212-746-5090

EXPERTISE: Psychopharmacology and Psychotherapy, Anxiety Disorder, Depression, Bipolar Disorder, Tic Disorder, Tourette Disorder, Obsessive-Compulsive Disorder, Attention Deficit Disorder With Hyperactivity, Attention Deficit Disorder Without Hyperactivity, Psychodynamic Psychotherapy



Khadijah Watkins, MD, MPH

21 Bloomingdale Road
White Plains, NY 10605
PHONE: 914-997-8613

EXPERTISE: Child & Adolescent Psychiatry, Mood and Anxiety Disorder, Parenting Issues, Attention Deficit Hyperactivity Disorder (ADHD)



Meredith Weiss, MD

525 East 68th Street, F-1184
New York, NY 10065
PHONE: 212-746-3766

EXPERTISE: Child and Adolescent Psychiatry, Psychopharmacology, Anxiety Disorder, Mood Disorder, Psychotherapy, Attention Deficit Hyperactivity Disorder (ADHD), Behavioral Disorder, Autism Spectrum Disorder, Tic Disorder, Tourette Disorder, Psychodynamic Therapy, Cognitive-Behavior Therapy (CBT), Grief, Adjustment Disorder, Eating Disorder, Reproductive Psychiatry



Jamie Winter, PhD

Center for Autism and the Developing Brain, 21 Bloomingdale Road,
Rogers Bldg
White Plains, NY 10605
PHONE: 914-997-4073
FAX: 914-997-4398

EXPERTISE: Early Intervention, Pivotal Response Training (PRT), Naturalistic Developmental Behavioral Interventions for Children with Autism, Early Start Denver Model (ESDM), Toddlers and Preschoolers with Autism, Parent Coaching for Families of Children with Autism, Autism Spectrum Disorder



Margaret J. Yoon, MD

525 East 68th Street
New York, NY 10065
PHONE: 212-746-3789
FAX: 212-746-5944

EXPERTISE: Pharmacology and Psychotherapy, Family Therapy, Mood Disorder, Depression and Anxiety Disorders, Bipolar Disorder, Post Traumatic Stress Disorder (PTSD), Obsessive-Compulsive Disorder (OCD), Attention Deficit Disorder (ADD) With Hyperactivity

Pulmonology



Stefan Worgall, MD, PhD

Chief, Pediatric Pulmonology, Allergy & Immunology
505 East 70th Street, Helmsley Medical Tower, 3rd Floor
New York, NY 10021

PHONE: 646-962-3410

FAX: 646-962-0246

EXPERTISE: Cystic Fibrosis, Congenital Anomaly of Lung, Broncho-Pulmonary Dysplasia, Bronchoscopy, Respiratory Disease, Pediatric Asthma, Chronic Lung Disease



Joseph Ciavarro, Jr., MS, PA-C, RRT

Program Coordinator, Pediatric Aerodigestive Center
505 East 70th Street, Helmsley Medical Tower, 3rd Floor
New York, NY 10021

PHONE: 646-962-3410

FAX: 646-962-0246



Gerald M. Loughlin, MD, MS

Chairman and Pediatrician-in-Chief, Department of Pediatrics
505 East 70th Street, Helmsley Medical Tower, 3rd Floor
New York, NY 10021

PHONE: 646-962-3410

FAX: 646-962-0246

EXPERTISE: Respiratory Disease, Pediatric Asthma, Sleep Apnea, Bronchoscopy, Chronic Lung Disease, Gastroesophageal Reflux



Sophia Pillai, MD

505 East 70th Street, Helmsley Medical Tower, 3rd Floor
New York, NY 10021

PHONE: 646-962-3410

FAX: 646-962-0246

EXPERTISE: Pediatric Pulmonology, Pediatric Asthma, Cystic Fibrosis, Chronic Lung Disease, Sleep Disorders, Bronchoscopy, Chronic Respiratory Conditions, Rett Syndrome and Breathing Abnormalities



Rizwana Popatia, MD

505 East 70th Street, Helmsley Medical Tower, 3rd Floor
New York, NY 10021
PHONE: 646-962-3410
FAX: 646-962-0246

EXPERTISE: Pediatric Pulmonology, Pediatric Asthma, Cystic Fibrosis, Bronchoscopy



Jeannie Ruiz, RN

Pediatric Nurse

505 East 70th Street, Helmsley Medical Tower, 3rd Floor
New York, NY 10021
PHONE: 646-962-3410
FAX: 646-962-0246

EXPERTISE: Pediatric Pulmonary



Anne Stone, MD

Director, Clinical and Educational Programs, Pediatric Pulmonology

505 East 70th Street, Helmsley Medical Tower, 3rd Floor
New York, NY 10021
PHONE: 646-962-3410
FAX: 646-962-0246

EXPERTISE: Pediatric Pulmonary Diseases, Pediatric Asthma, Bronchoscopy, Cystic Fibrosis, Chronic Lung Disease



Haviva Veler, MD

Director, Pediatric Sleep and Breathing Disorders Center

505 East 70th Street, Helmsley Medical Tower, 3rd Floor
New York, NY 10021
PHONE: 646-962-3410
FAX: 646-962-0246

EXPERTISE: Pediatric Sleep Medicine, Pediatric Pulmonology, Chronic Lung Disease, Cystic Fibrosis, Pediatric Asthma, Home Mechanical Ventilation, Lung Disease in Neuromuscular Patients

Radiology



Arzu Kovanlikaya, MD

Chief, Pediatric Radiology
525 East 68th Street, F-631
New York, NY 10065
PHONE: 212-746-2555

EXPERTISE: Pediatric Neuroradiology, Pediatric Radiology



Pooja Renjen, MD

525 East 68th Street, F-631
New York, NY 10065
PHONE: 212-746-9729

EXPERTISE: Diagnostic Radiology, Pediatric Radiology



Daniel Rosenbaum, MD

525 East 68th Street, F-631
New York, NY 10065
PHONE: 212-746-2554
FAX: 212-746-0138

EXPERTISE: Diagnostic Radiology, Pediatric Radiology

Rehabilitation Medicine



Heakyung Kim, MD

525 East 68th Street, Baker 16
New York, NY 10065
PHONE: 212-746-1500
FAX: 212-746-8303

EXPERTISE: Pediatric Rehabilitation Medicine, Pediatric Pain Management, Pediatric Stroke, Pediatric Neuromuscular Disease, Inflammatory Muscle Disease, Muscle Atrophy, Traumatic Brain Injury, Foot Deformity, Spasticity, Spina Bifada, Muscle Pain, Pediatric Cerebral Palsy, Musculoskeletal Rehabilitation, Baclofen Pump Injection, Botulinum Toxin Injection, Abnormal Gait, Spinal Cord Injury, Muscle Stiffness

Rheumatology



Thomas J.A. Lehman, MD

Chief, Pediatric Rheumatology
Hospital for Special Surgery, 535 East 70th Street
New York, NY 10021
PHONE: 212-606-1151
FAX: 212-606-1938

EXPERTISE: Pediatric Rheumatology, Childhood Systemic Lupus Erythematosus, Childhood Scleroderma, Vasculitic Diseases of Childhood



Alexa B. Adams, MD

Hospital for Special Surgery, 535 East 70th Street, 5th Floor
New York, NY 10021
PHONE: 212-774-2083
FAX: 212-774-7367

EXPERTISE: Pediatric Rheumatology, Juvenile Rheumatoid Arthritis, Juvenile Arthritides, Juvenile Dermatomyositis, Childhood Systemic Lupus, Vasculitides of Childhood



Nancy Pan, MD

Hospital for Special Surgery, 535 East 70th Street
New York, NY 10021
PHONE: 646-797-8514
FAX: 212-774-7367

EXPERTISE: Pediatric Rheumatology, Childhood Arthritis, Childhood Systemic Lupus Erythematosus, Vasculitic Diseases of Childhood, Systemic Sclerosis, Juvenile Dermatomyositis

Sleep Medicine



Haviva Veler, MD

Director, Pediatric Sleep and Breathing Disorders Center
505 East 70th Street, Helmsley Medical Tower, 3rd Floor
New York, NY 10021
PHONE: 646-962-3410
FAX: 646-962-0246

EXPERTISE: Pediatric Sleep Disorders, Sleep Apnea, Snoring, Airway Disorder, Narcolepsy, Sleepwalking, Excessive Daytime Sleepiness, Night Terrors, Circadian Rhythm Sleep Disorder, Restless Legs Syndrome, Multiple Sleep Latency Test, Pediatric Pulmonology

Urology



Dix P. Poppas, MD, FAAP, FACS

Chief, Pediatric Urology

525 East 68th Street, Box 94, Room F-935

New York, NY 10065

PHONE: 212-746-5337

FAX: 212-746-8065

3010 Westchester Avenue, 4th Floor, Suite 401

Purchase, NY 10577

PHONE: 212-746-5337

EXPERTISE: Pediatric Urology, Laparoscopic and Robotic Surgery, Reconstructive Surgery, Congenital Anomaly of the Kidney or Bladder, Undescended Testicle, Hernias, Urinary Reflux, Hypospadias, Congenital Adrenal Hyperplasia (CAH), Disorders of Sex Development



Andrew J. Combs, PA-C

Director, Pediatric Urodynamics Unit

525 E. 68th Street, Box 94, Room F-918

New York, NY 10065

PHONE: 212-746-5337

FAX: 212-746-8149

EXPERTISE: Pediatric Urology



Denise Galan, CPNP

Director of Pediatric Enuresis Clinic

525 E. 68th Street, Box 94, Room F-931

New York, NY 10065

PHONE: 212-746-5337

FAX: 212-746-8065

EXPERTISE: Pediatric Urology, Enuresis (Bedwetting)



Carlos Medina, MD

525 East 68th Street Box 94, Room F-918

New York, NY 10065

PHONE: 212-746-5361

FAX: 212-746-8149

New York Methodist Hospital

263 7th Avenue, 4th Floor, Suite 4E

Brooklyn, NY 11215

PHONE: 212-746-5361

EXPERTISE: Pediatric Urology, Voiding Dysfunction, Voiding Disorders,
Pediatric Stone Disease, Enuresis

Voluntary and Affiliated Pediatric Faculty

The following doctors have Hospital and/or College appointments in the Department of Pediatrics with NewYork-Presbyterian Hospital and/or Weill Cornell Medicine.

Amina Abdeldaim, MD
Mona Amin, DO
Jane Aronson, DO
Mona Bagrodia, MD
Divya Balachandar, MD
Myron Beer, MD
Laurie Belosa, MD
Staci Bodner, MD
Adine Brandes, MD
Bruce Brovender, MD
Lori Caesar, MD
Maja Castillo, MD
Carolyn Jean-An Chang, MD
Talia Chao, DO
Eda Chao, MD
Eileen T. Chen, MD
Karen Chiu, MD
Stephanie Christensen, MD
May K. Chu, MD
Abe Chutorian, MD
Michel Cohen, MD
Suzanne Cole, MD
Erin Dalton, MD
Barbara Ann Dash, MD
Jana Dehovitz, MD
Mary DiMaio, MD
Jeffrey Hall Dobken, MD
Gary Edelstein, MD
Emily Eida, MD
Rebecca Farber, MD
Mark Fenster, MD
Amanda Ficacelli, MD
Mindy Gallagher, DO
Tracy Gallagher, MD
Gargi Gandhi, MD
Karyn Ginsberg, MD
Tricia Jean Gold, MD
Judith Goldstein, MD
Melissa Goldstein, MD
Mason Gomberg, MD
Philippa Ruth Gordon, MD
Seth Gordon, MD
Lara Gordon, MD

Annamarie Greco, MD
Katherine Grimm, MD
Zachary Grinspan, MD
Ivy Grodman, MD
Madhu Gudavalli, MD
Nancy Han, MD
Alissa Hersh, MD
Dyan Hes, MD
Carolyn B. Hildebeitel, MD
Sharon Ho, MD
Shao-Fen Sherry Huang, MD
Anita Ong Hui, MD
Stewart Kaplan, MD
Katherine Karlsrud, MD
Cory Kercher, MD
Danijela Kero, MD
Brigitte Kerpsack, MD
Tiffany Otto Knipe, MD
Davi Ko, MD
Fotini Kokotos, MD
Karen Koser, MD
Neal M. Kotin, MD
Edward Kulich, MD
Smita R. Kumar, MD
Christine Lambiris, MD
Karen Lancry, MD
Barbara Landreth, MD
Cheuk Wai Lau, MD
Uri Lavy, MD
Anna Law, MD
Robert Leggiadro, MD
Lucy Leung-Eng, MD
Sarah Cheukman Li, MD
Yan Li, PhD
Joseph Licata, MD
Roy H. Lieberman, MD
Sebastian Lighvani, MD
Deborah Ho Lin, MD
Shin-Hua Liu, MD
Caroline Baker Long, MD
Ralph Lopez, MD
Austin Lu, MD
Julie Luttinger, MD

Voluntary and Affiliated Pediatric Faculty, Continued

Yasmin Lyons, DO
Miu Ma, MD
Noel Maclaren, MD
Tamar Magnas, MD
Cecilia Mak, MD
Joelle Mast, MD
Binu Mathew, MD
Yvonne Barbara McFarlane-Ferreira,
MB,BS
Richard Merkler, MD
Karen Moalem, MD
Karl Neumann, MD, FAAP
Brigitte Newman, MD
Meryl Newman-Cedar, MD
Amish Nishawala, MD
Brianna E. O'Connor, MD
Eric John Ogden-Wolgemuth, MD
Yen Hoong Ooi, MD
Kim Overby, MD
Vicki Papadeas, MD
Palmo Pasquariello, MD
Anna Pawlik, MD
Cynthia Pegler, MD
Eric Poon, MD
Monica Pozzuoli, MD
Oded Preis, MD
Jason Price, MD
Edna Pytlak, MD
Madhu Rajaram, MBBS
Irwin Rappaport, MD
William Rappaport, MD
Layne Raskin, MD
Annette Rickel, MD
Ana Rodriguez, PhD
Kathryn Rooth, DO
Michael Rosenbaum, MD
Beth Rosenberg, MD
Eric A. Rosenberg, MD
Suzanne Rosenfeld, MD
Jane Rosini, MD
Chloe Rowe, MD
Ali Sabrakesh, MD
Bruce Sacks, MD
Marie Sanford, MD
Lucia J. Santiago, MD
Shelley Satterlee, MD
Moitri Chowdhury Savard, MD
Jeanette Sawyer-Cohen, MD
Janis I. Schaeffer, MD
Michael Schessel, MD
Jessica Schratler, MD
Lauren Schulwolf, MD
Audrey Olivera Schwabe, MD
Stephanie Shaps, MD
Chunpang Tony Shen, MD
Jenny Shih, MD
Philippe Similon, MD
Steven Simonte, MD
Kathryn Snyder, MD
Katarzyna Sobczynska, MD
Barney Softness, MD
Josef Soloway, MD
Jane Soohoo, MD
William Spivak, MD
Cathryn Stamatou, MD
Mitchell Stevens, MD
Pearl Tam, MD
Chyne Tan, MD
Lisa Thebner, MD
Shiwei Tong, MD
Osvaldo Trigo, MD
Marguerite Uphoff, MD
Mekhla Varma, MBBS
Melissa Varma, MD
Anu Vatsan, MD
Jessica Wang, MD
Zhao Wang, MD
Corey Wasserman, MD
Ayala Wegman Miller, MD
Jona Weiss, MD
Dominika Wittek, MD
Danielle Wolloch, MD
Maicie Wong, MD
May K. Yu, MD
Fazlul H. Yusuf, MD
Adam Zaentz, MD
Stephanie Zandieh, MD
Jean Q. Zheng, MD
Sharon Zheng, MD
Susan Zona-O'Byrne, MD

Index

Abraham, Seena S., MBBS	12
Abramson, Erika, MD, MSc	34
Adams, Alexa B., MD	65
Akchurin, Oleh, MD, PhD	42
Aledo, Alexander, MD	33
Alfonzo, Michael, MD	22
Amin, Prina P., MD	16
Ancelson, Paula, DMD	19
Antal, Zoltan, MD	25
Bacha, Emile, MD	15
Bailon, Claudette, RN	8
Barfield, Elaine, MD	27
Bassetti, Jennifer, MD	30
Bender, Anna M., MD	20
Benjelloun, Rachid, MD	42
Bennett, Shannon, PhD	51
Bergstrom, Katherine, MS, CGC	30
Bishop, Naomi B., MD	17
Blanco, John S., MD	48
Block, Laurie, RND, CDE	25
Borcherding, Breck, MD	51
Bostwick, Susan B., MD, MBA	34
Brown, Carolyn, MS, CGC	31
Bussel, James B., MD	33
Carley, Michelle C., MD	9
Carroll, Sheila J., MD	12
Censani, Marisa, MD	25
Chai, Paul J., MD	15
Chang, Catherine, MD	41
Chang, Jane, MD	8
Chen, Cynthia L., MD	20
Chernoff, Karen, MD	20
Chiao, Franklin, MD	9
Chien, Kimberley A., MD	27
Ching, Kevin Y., MD	22
Chiu, Angela, MD	52
Ciavarro, Jr., Joseph, MS, PA-C, RRT	8, 62
Ciecierega, Thomas, MD	27
Ciralsky, Jennifer, MD	47
Cohen, Lilian L., MD	31
Cohen, Mia G., MD	52
Combs, Andrew J., PA-C	66
Coppedge, Emily, RN, CPNP, CDE	26
Coupet, Vanessa, DMD	19

Cross, Jennifer F., MD	15
Crumby, Ashley K., MD	52
Crystal, Matthew A., MD	13
Cunniff, Christopher M., MD	30
Daluisi, Aaron, MD	49
Dave, Anjalee, MD	9
Dayton, Jeffrey, MD	13
DeLaMora, Patricia A., MD	40
Desai, Bhumika, MD	37
Dienna, Erik, MD	37
Ding, Helen T., MD	52
Dinner, Miles H., MD	10
DiPace, Jennifer I., MD	34
Dodwell, Emily R., MD, MPH, FRCSC	49
Doyle, Shevaun Mackie, MD	49
Dufek, Sarah, PhD	53
Elias, Rony T., MD	31
Engel, Murray, MD	44
Esperanza, Pamelynn, MD	53
Falk, Avital, PhD	53
Feuer, Alexis, MD	26
Finkelstein, Robert, MD	17, 22
Flynn, Patrick A., MD	13
Friedman, Mia, MD	22
Galan, Denise, CPNP	66
Gomillion, Matthew C., MD	10
Gopin, Chaya B., PhD, ABPP-CN	53
Gordon, Lara, MD	16
Gorman, Allison, MD	34
Green, Cori M., MD, MSc	35
Green, David W., MD, MS, FAAP, FACS	49
Greenfield, Jeffrey P., MD, PhD	46
Greenwald, Bruce M., MD	17
Grinspan, Zachary, MD, MS	44
Grody, Michael B., MD	54
Groves, Alan, MD	41
Gupta, Neera, MD, MAS	27
Gurvitch, Dana L., MD	10
Hampton, Elisa P., MD	35
Han, Jung Hee, MD	10
Han, Peggy, MD	17
Hariton, Jo R., PhD	54
Hatziergati, Despina, MD	54
Hau, Duncan, MD	37
Haussner, Therese, MS, PA-C	46

Index, continued

Heier, Linda A., MD	45
Hertzog, Margaret E., MD	54
Hicks, Catherine F., MD	23
Hillard, MacKenzie N., MD	35
Hoffman, Caitlin E., MD	46
Howell, Joy D., MD	18
Hsing, Deyin D., MD	18
Huerta, Marisela, PhD	55
Hughes-Feltenberger, Megan, PhD	55
Huston, Katherine Barth, MD	37
Ipp, Lisa S., MD	8
Jirasevijinda, Thanakorn, MD	35
Jorizzo, Joseph L., MD	21
Kalfa, David, MD, PhD	15
Kaplan, Rachel, MEd, MSN, CPNP	16
Kapur, Sandip, MD	43
Kasdorf, Ericalyn, MD	41
Kasem, Amanda, MD	23
Keown, Mary Kathleen, MD	38
Kern, Jeffrey H., MD	13
Kessler, Edmund, MB, BCh	29
Killinger, James S., MD	18
Kim, Heakyung, MD	64
Kligman, Isaac, MD	31
Koff, Howard Daniel, MD	10
Kondrich, Janienne, MD	23
Kosofsky, Barry E., MD, PhD	43
Kovanlikaya, Arzu, MD	64
Kowalsky, Rachel H., MD, MPH	23
Kucine, Nicole, MD	33
Kumar, Juhi, MD, MPH	43
Lame, Mary, MD	24
Lehman, Thomas J.A., MD	65
Lekarev, Oksana, MD	26
Levy, Richard L., MD	47
Levy, Tal, MD	11
Li, Annie, MD	55
Lieberman, Leonardo, MD	13
Lin, Sophia, MD	24
Listman, David H., MD	21
Loeb-Zeitlin, Susan E., MD	32
Lord, Catherine, PhD	55
Loughlin, Gerald M., MD, MS	62
Lupica, Marie, MD, MS	24
Maresh, Alison M., MD	51

Marks, Matthew, MD	38
Martin, Cynthia, PhD	56
Mathews, Tara, PhD	56
McBride, Anne P., MD	56
McGuinn, Catherine E., MD	33
Medina, Carlos, MD	67
Mehta, Aarti, MD	11
Merchant, Sabiha R., MBBS	44
Merianos, Demetri J., MD	29
Messing, Jacob, MD	57
Milrod, Barbara L., MD	57
Mitchell, Elisabeth, PhD	57
Mitchell, W. Beau, MD	33
Modi, Janki, MD	57
Modi, Vikash K., MD	50
Mohatt, Justin, MD	58
Montgomery, Mary E., MS, RD, CDN	44
Moreno, Lisa, MD	9
Nellis, Marianne, MD	18
Oh, Stephen, MD	29
O'Herron, Siobhan E., MD	58
Olsen, Kristin, MD	38
Oltra, Erica, MD	47
Ono, Jennie G., MD	36
Orlin, Anton, MD	48
Osorio, S. Nena, MD	36
Pan, Nancy, MD	65
Parow, Aimee M., MD	42
Patel, Deepa, MD	38
Patel Gupta, Mrinali, MD	48
Patten, Tara, RN	28
Perelstein, Eduardo M., MD, MPH	42
Perepletchikova, Francheska, PhD	58
Perlman, Jeffrey M., MB, ChB	40
Pfeffer, Cynthia R., MD	58
Pillai, Sophia, MD	62
Platt, Shari L., MD	21
Polaneczky, Margaret M., MD, MS	32
Pon, Steven, MD	19
Poole-Di Salvo, Elizabeth A., MD	16
Popatia, Rizwana, MD	63
Poppas, Dix P., MD, FAAP, FACS	66
Raggio, Cathleen L., MD	50
Rainaldi, Matthew A., MD	41
Raju, Praveen, MD, PhD	45

Index, continued

Recio, Evita, MD	39
Renjen, Pooja, MD	64
Rivera, Janet, MD	39
Rodriguez, Normaliz, MD	39
Rosenbaum, Daniel, MD	64
Rosenthal, Michele, MD	24
Ross, Gail S., PhD	41
Roth, Lisa G., MD	34
Ruiz, Jeannie, RN	63
Salvatore, Christine M., MD	40
Samuels, Susan, MD	59
San Diego, Nora-Lynn F., MD	59
Savard, Peter M., MD	11
Schaefer, Maureen, RN, BSN	46
Scharoun, Jacques H., MD	11
Schattman, Glenn L., MD, FACOG	32
Scher, David M., MD	50
Scott, Rebecca, MD	36
Shapiro, Theodore, MD	59
Sharma, Aarti, MD, MBBS	9
Shear, Matthew, MD	59
Sheth, Sujit, MD	32
Silver, Eric, MD	14
Singh, Harsimran S., MD, MSc	14
Sink, Ernest L., MD	50
Sokolow, Robbyn E., MD	26
Solomon, Aliza, DO	28
Solomon, Gail E., MD	45
Souweidane, Mark M., MD, FACS, FAAP	45
Spaniard, Alma, MD	60
Spector, Brooke I., MD	36
Spigland, Nitsana A., MD	28
Steigman, Shaun A., MD	30
Stein, David G., MD	11
Steinberg, L. Gary, MD	14
Stone, Anne, MD	63
Stone, Jeremy E., MD	60
Suman, Hridya, MD, MS	43
Tibbetts, Rachele, MD	39
Tjan, Joseph, MD	12
Torres, Alejandro, MD	14
Toussi, Sima S., MD	40
Traube, Chani, MD	19
Tricamo, Michelle L., MD	60
Veler, Haviva, MD	63, 65

Vitberg, Yaffa M., MD 25
Walkup, John T., MD 51
Ward, Mary J., PhD 16
Watkins, Khadijah, MD, MPH 60
Weiss, Meredith, MD 61
Widmann, Roger F., MD 48
Wildman, Horatio F., MD 21
Winter, Jamie, PhD 61
Worgall, Stefan, MD, PhD 62
Yap, Vivien L., MD 42
Yeung, Albert C., MD 12
Yoon, Margaret J., MD 61

NOTES



nyp.org/komansky



Weill Cornell Medicine
Pediatrics



NewYork-Presbyterian
Phyllis and David Komansky
Center for Children's Health

AMAZING
THINGS
ARE
HAPPENING
HERE

for kids